

Recombinant Human IgG2A Protein

Catalog No.: RPT0005

Recombinant

Sequence Information

Species	Gene ID	Swiss Prot
Human	3501	P01859

Tags

NO-tag

Synonyms

IGHG2|Immunoglobulin heavy constant gamma 2;
IgG2

Product Information

Source	Purification
HEK293 cells	>97% by SDS-PAGE.

Endotoxin

<0.1 EU/μg

Formulation

Lyophilized from a 0.22 μm filtered solution of PBS, pH 7.4. Contact us for customized product form or formulation.

Reconstitution

Centrifuge the vial before opening. Reconstitute to a concentration of 0.1-0.5 mg/mL in sterile distilled water. Avoid vortex or vigorously pipetting the protein. For long term storage, it is recommended to add a carrier protein or stabilizer (e.g. 0.1% BSA, 5% HSA, 10% FBS or 5% Trehalose), and aliquot the reconstituted protein solution to minimize free-thaw cycles.

Contact

Telephone: 400-999-6126

E-mail: cn.market@abclonal.com.cnWeb: www.abclonal.com.cn

Background

Constant region of immunoglobulin heavy chains. Immunoglobulins, also known as antibodies, are membrane-bound or secreted glycoproteins produced by B lymphocytes. In the recognition phase of humoral immunity, the membrane-bound immunoglobulins serve as receptors which, upon binding of a specific antigen, trigger the clonal expansion and differentiation of B lymphocytes into immunoglobulins-secreting plasma cells. Secreted immunoglobulins mediate the effector phase of humoral immunity, which results in the elimination of bound antigens.

Basic Information

Description

Recombinant Human IgG2A Protein is produced by HEK293 cells expression system. The target protein is expressed with sequence (Glu99-Lys326) of human IgG2A (Accession #) fused with no additional amino acid.

Bio-Activity

Measured by its binding ability in a functional ELISA. Immobilized Human CD32a (Catalog: RP00081) at 2 μg/mL (100 μL/well) can bind Human IgG2 (Catalog: RPT0005) with a linear range of 1.2-338 ng/mL.

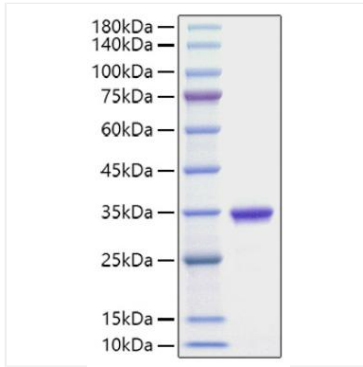
Storage

Store the lyophilized protein at -20°C to -80 °C for long term.

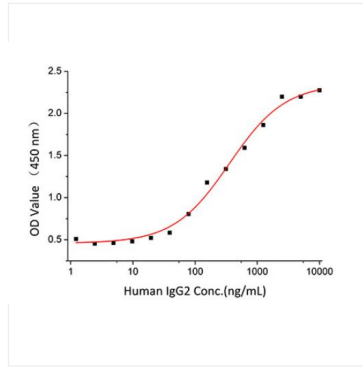
After reconstitution, the protein solution is stable at -20 °C for 3 months, at 2-8 °C for up to 1 week.

Avoid repeated freeze/thaw cycles.

Validation Data



Recombinant Human IgG2A Protein was determined by SDS-PAGE with Coomassie Blue, showing a band at 25-35 kDa.



Immobilized Human CD32a (Catalog: RP00081) at 2 $\mu\text{g/mL}$ (100 $\mu\text{L/well}$) can bind Human IgG2 (Catalog: RPT0005) with a linear range of 1.2-338 ng/mL.