

Recombinant Aequorea victoria EGFP Protein

Catalog No.: RPT0003

Recombinant

Sequence Information

Species Gene ID Swiss Prot

Aequorea victoria P42212

Tags

C-His

Synonyms

Green fluorescent protein; GFP; EGFP

Product Information

Source Purification

HEK293 cells >95% by SDS-PAGE.

Endotoxin

<0.1 EU/μg

Formulation

Lyophilized from a 0.22 μm filtered solution of PBS, pH 7.4. Contact us for customized product form or formulation.

Reconstitution

Centrifuge the vial before opening. Reconstitute to a concentration of 0.1-0.5 mg/mL in sterile distilled water. Avoid vortex or vigorously pipetting the protein. For long term storage, it is recommended to add a carrier protein or stabilizer (e.g. 0.1% BSA, 5% HSA, 10% FBS or 5% Trehalose), and aliquot the reconstituted protein solution to minimize free-thaw cycles.

Contact

Telephone: 400-999-6126

E-mail: cn.market@abclonal.com.cn

Web: www.abclonal.com.cn

Background

GFP, also known as Green Fluorescent Protein, is a protein produced by the jellyfish (Aequorea Victoria) that produces bioluminescence in the green zone of the noticeable spectrum. Green Fluorescent Protein is a useful and ubiquitous instrument for producing chimeric proteins, where it functions as a fluorescent protein tag. GFP is expressed in most known cell types and is used as a noninvasive fluorescent marker in living cells and organisms. Green Fluorescent Protein permits a broad range of applications where it has functioned as a cell lineage tracer, reporter of gene expression, or as a measure of protein-protein interactions. Enhanced GFP (eGFP) has F64L and S65T mutations, which make GFP show increased fluorescence and fold more efficiently under 37°C.

Basic Information

Description

Recombinant Aequorea victoria GFP Protein is produced by HEK293 cells expression system. The target protein is expressed with sequence (Met1-Lys238) of aequorea victoria GFP (Accession #) fused with a 6×His tag at the C-terminus.

Bio-Activity

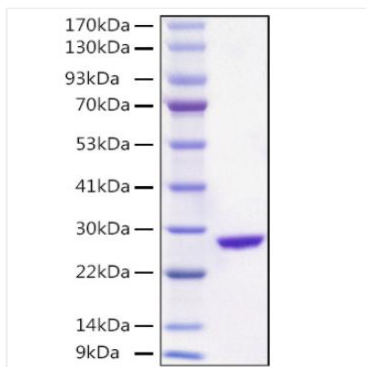
Storage

Store the lyophilized protein at -20°C to -80 °C for long term.

After reconstitution, the protein solution is stable at -20 °C for 3 months, at 2-8 °C for up to 1 week.

Avoid repeated freeze/thaw cycles.

Validation Data



Recombinant *Aequorea victoria* GFP Protein was determined by SDS-PAGE with Coomassie Blue, showing a band at 25kDa.