

## Product Components

Components	Component number	Size-1	Size-2
		500 $\mu$ L	2.5 mL
DL2000 plus DNA Marker	RM30230	1 $\times$ 500 $\mu$ L	5 $\times$ 500 $\mu$ L

## Product Description

The DL2000 plus DNA Marker is a ready-to-use DNA Marker, which is pre-mixed with loading dye for direct gelloading. This product consists of 6 individual DNA fragments: 100 bp, 250 bp, 500 bp, 750 bp, 1000 bp and 2000 bp, derived from a mixture of PCR products and specifically digested plasmid DNA. The 2000 bp and 750 bp fragment are present at increased intensity for easy identification.

## Storage

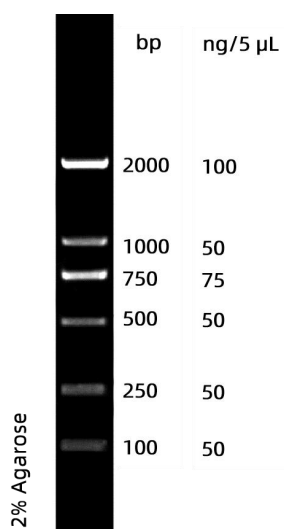
Store at  $-20^{\circ}\text{C}$  for long-term storage. Store at  $4^{\circ}\text{C}$  after thawing for short-term use and avoid repeated freezing and thawing.

## Notes

1. Please thaw and mix thoroughly before use.
2. Please change the electrophoresis buffer in time, and use freshly prepared agarose gel to avoid affecting the electrophoresis results.

## Experiment Process

1. As a ready-to-use product, load 5  $\mu$ L on gel for each sample is recommended, and if the well is wide, loading volume can be increased appropriately for electrophoresis.
2. The recommended condition is 1 $\times$  TAE buffer or 0.5 $\times$  TBE buffer, 2%-3% agarose gel, and 4-10 V/cm between positive and negative electrodes.
3. Use UV transilluminator to detect DNA bands stained with nucleic acids stain dye.
4. The electrophoresis results of the DL2000 plus DNA Marker are shown below.



DL2000 plus DNA Marker