

Rat Superoxide dismutase [Cu-Zn] (Sod1) ELISA Kit

Catalog NO.: RK07054

version: 2.0

This package insert must be read in its entirety
before using this product

Introduction

This kit uses the competitive method to quantitatively determine the content of Sod1 in rat serum, plasma, cell culture supernatant or other biological body fluids.

Principle of the Assay

This assay employs the competitive inhibition enzyme immunoassay technique. An antibody specific to Sod1 has been pre-coated onto a microplate. A competitive inhibition reaction is launched between biotin labeled Sod1 and unlabeled Sod1 (standards or samples) with the pre-coated antibody specific to Sod1. After incubation, the unbound conjugate is washed off. Next, avidin conjugated with Horseradish Peroxidase (HRP) is added to each microplate well and incubated. The amount of bound HRP conjugate is reversely proportional to the concentration of Sod1 in the sample. After addition of the chromogenic substrate, the intensity of color developed is reverse proportional to the concentration of Sod1 in the sample.

Material Provided & Storage Conditions

Store unopened kit at 2-8 °C for 1 week. If more than one week, please keep the components of the kit according to the instructions , Do not use after expiration date. It is highly recommended to use the remaining reagents within 1 month after opening.

Part	Size	Cat. No.	Storage of opened/reconstituted material
Antibody Coated Plate	8×12	RM47196	Return unused wells to the foil pouch containing the desiccant pack and store at ≤ -20 °C. Reseal along entire edge of zip-seal.
Standard Lyophilized	2 vials	RM47197	Aliquot and store at ≤ -20 °C in a manual defrost freezer. Avoid repeated freeze-thaw cycles.
Concentrated Biotin- Conjugate Antigen(100×)	1 ×60μL	RM47198	May be stored for up to 6 month at -20 °C.*

Streptavidin-HRP Concentrated (100x)	1 x120ul	RM47199	May be stored for up to 6 month at 2-8 °C.*
Standard/Sample Diluent (R1)	1 x20mL	RM00023	May be stored for up to 6 month at 2-8 °C.*
Biotin- Conjugate Antigen Diluent(R2)	1 x10mL	RM00024	
Streptavidin-HRP Diluent(R3)	1 x10mL	RM00025	
Wash Buffer(25x)	1 x30mL	RM00026	
TMB Substrate	1 x10mL	RM00027	
Stop Solution	1 x10mL	RM00028	
Plate Sealers	4 Strips		
Specification	1		

Other Supplies Required

1. Microplate reader capable of measuring absorbance at 450 nm, with the correction wavelength set at 630 nm or 570 nm.
2. Pipettes and pipette tips.
3. Deionized or distilled water.
4. Squirt bottle, manifold dispenser, or automated microplate washer.
5. Incubator.
6. Test tubes for dilution of standards and samples.

Precautions

*** FOR RESEARCH USE ONLY. NOT FOR USE IN DIAGNOSTIC PROCEDURES.**

1. Any variation in diluent, operator, pipetting technique, washing technique, incubation time or temperature, and kit age can cause variation in binding.
2. Variations in sample collection, processing, and storage may cause sample value differences.
3. Reagents may be harmful, if ingested, rinse it with an excess amount of tap water.
4. Stop Solution contains strong acid. Wear eye, hand, and face protection.
5. Please perform simple centrifugation to collect the liquid before use.
6. Do not mix or substitute reagents with those from other lots or other sources.
7. Adequate mixing is particularly important for good result. Use a mini-vortexer at the lowest frequency.
8. Mix the sample and all components in the kits adequately, and use clean plastic container to prepare all diluents.

9. Both the sample and standard should be assayed in duplicate, and reagents should be added in sequence in accordance with the requirement of the specification.
10. Reuse of dissolved standard is not recommended.
11. The kit should not be used beyond the expiration date on the kit label.
12. The kit should be away from light when it is stored or incubated.
13. To reduce the likelihood of blood-borne transmission of infectious agents, handle all serum, plasma, and other biological fluids in accordance with NCCLS regulations.
14. To avoid cross contamination, please use disposable pipette tips.
15. Please prepare all the kit components according to the Specification. If the kits will be used several times, please seal the rest strips and preserve with desiccants. Do use up within 2 months.
16. This assay is designed to eliminate interference by other factors present in biological samples.
17. Until all factors have been tested in this assay, the possibility of interference cannot be excluded.
18. The 48T kit is also suitable for the specification.

Sample Collection & Storage

The sample collection and storage conditions listed below are intended as general guidelines. Sample stability has not been evaluated.

Samples containing the correlated IgG as in this kit may interfere with this assay.

Cell Culture Supernatant: Remove particulates by centrifugation. Assay immediately or aliquot and store samples at ≤ -20 °C. Avoid repeated freeze-thaw cycles.

Serum: Use a serum separator tube (SST) and allow samples to clot for 30 minutes at room temperature before centrifugation for 15 minutes at 1000 x g. Remove serum and assay immediately or aliquot and store samples at ≤ -20 °C. Avoid repeated freeze-thaw cycles.

Plasma: Collect plasma using EDTA or Heparin as an anticoagulant. Centrifuge for 15 minutes at 1000xg within 30 minutes of collection. Assay immediately or aliquot and store samples at ≤ -20 °C. Avoid repeated freeze-thaw cycles. (Note: Citrate plasma has not been validated for use in this assay.)

Other biological fluids: Centrifuge samples for 20 minutes at 1,000×g. Collect the supernatants and assay immediately or store samples in aliquot at -20°C or -80°C for later use. Avoid repeated freeze-thaw cycles.

Note: It is suggested that all samples in one experiment be collected at the same time of the day. Avoid hemolytic and hyperlipidemia sample for serum and plasma.

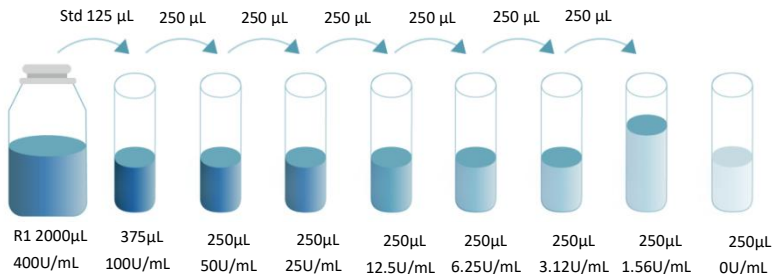
Reagent Preparation

Bring all reagents to room temperature before use. If crystals have formed in the concentrate, Bring the reagent to room temperature, and mix gently until the crystals have completely dissolved.

Standard - Reconstitute the Standard Lyophilized with 2.0 mL Standard/Sample Diluent(R1). This reconstitution produces a stock solution of 400U/mL. Mix the standard to ensure complete reconstitution and allow the standard to sit for a minimum of 15 minutes with gentle agitation prior to making

dilutions.

Use the 400U/mL standard stock to produce a dilution series (below) with Standard/Sample Diluent(R1). Mix each tube thoroughly and change pipette tips between each transfer (recommended concentration for standard curve: 100, 50, 25, 12.5, 6.25, 3.12, 1.56, 0U/mL). Use diluted standards within 60 minutes of preparation.



Working Biotin Conjugate Antigen - Dilute 1:100 of Concentrated Biotin Conjugate Antigen (100x) with Biotin-Conjugate Antigen Diluent (R2) before use. For example: Add 20 µL of Concentrated Biotin Conjugate Antibody (100x) to 1980 µL Biotin-Conjugate Antigen Diluent (R2) to prepare 2000 µL Working Biotin Conjugate Antigen Buffer.

Working Streptavidin-HRP - Dilute 1:100 of Concentrated Streptavidin-HRP (100x) with Streptavidin-HRP Diluent (R3) before use. For example: Add 20 μ L of Concentrated Streptavidin-HRP (100x) to 1980 μ L Streptavidin-HRP Diluent (R3) to prepare 2000 μ L Working Streptavidin-HRP Buffer.

Wash Buffer - If crystals have formed in the concentrate, warm to room temperature and mix gently until the crystals have completely dissolved. Dilute 1:25 with double distilled or deionized water before use. For example: Add 16 mL of Wash Buffer Concentrate to 384 mL of deionized or distilled water to prepare 400 mL of Wash Buffer.

Assay Procedure

Bring all reagents and samples to room temperature before use. It is recommended that all standards, controls, and samples be assayed in duplicate.

1. Remove excess microplate strips from the plate frame, return them to the foil pouch containing the desiccant pack, and reseal.
2. Prepare the Biotin Conjugate Antigen Concentrated (100x) Working Solution 15 minutes early before use.
3. Add 50 μ L Standard/sample Diluent (R1) in blank well, add 50 μ L different concentration of standard or sample in other wells. And then add Biotin Conjugate Antigen Working Solution in each well (50 μ L/well), cover with a new adhesive sealer provided. Incubate for 1 hour at 37° C.
4. Prepare the Streptavidin-HRP Concentrated (100x) Working Solution 15minutes early before use.
5. Remove the liquid of each well, add wash buffer 350 μ L/well, aspirate each well after holding 60-120 seconds, repeating the process two times for a total of three washes.

6. Add Streptavidin-HRP Working Solution in each well (100 μ L/well), cover with a new adhesive sealer provided. Incubate for 30 minutes at 37°C.
7. During the incubation, turn on the microplate reader to warm up for 30 minutes before measuring.
8. Remove the liquid of each well, add wash buffer 350 μ L/well, aspirate each well after holding 60-120 seconds, repeating the process four times for a total of five washes.
9. Add TMB Substrate (90 μ L/well). Incubate for 15-20 minutes at 37°C. Protect from light.
10. Add Stop Solution (50 μ L/well), determine the optical density of each well within 5 minutes, using a Microplate reader set to 450 nm. If wavelength correction is available, set to 570 nm or 630 nm. If wavelength correction is not available, subtract readings at 570 nm or 630 nm from the readings at 450 nm. This subtraction will correct for optical imperfections in the plate. Readings made directly at 450 nm without correction may cause higher value and less accurate result.

Assay Procedure Summary

Prepare the standard and reagents



Add 50ul of standards or test samples to each well



Add 50ul Working Biotin-Conjugate Antigen



Incubate for 1 hours at 37°C, then wash 3 times



Add 100ul Working Streptavidin-HRP



Incubate for 0.5 hour at 37°C, then wash 5 times



Add 90ul Substrate Solution



Incubate for 15-20 min at 37°C under dark condition



Add 50ul Stop Solution



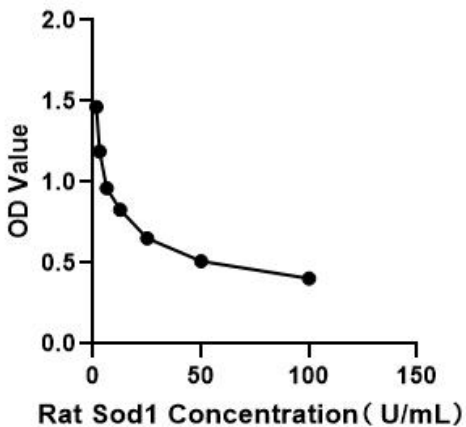
Detect the optical density within 5 minutes under 450nm.

Correction Wavelength set at 570nm or 630nm

Calculation of Results

1. Average the duplicate readings for each standard, control and sample, and subtract the average zero standard optical density (O.D.).
2. Create a standard curve by reducing the data using computer software capable of generating a four-parameter logistic (4-PL) curve-fit. As an alternative,
3. construct a standard curve by plotting the mean absorbance for each standard on the Y-axis against the concentration on the X-axis and draw a best fit curve through the points on a log/log graph. The data may be linearized by plotting the log of the Sod1 concentrations versus the log of the O.D. on a linear scale, and the best fit line can be determined by regression analysis.
4. If samples have been diluted, the concentration read from the standard curve must be multiplied by the dilution factor.

Typical Data



The standard curves are provided for demonstration only. A standard curve should be generated for each set of Sod1 assayed.

Detection Range

1.56-100U/mL

Sensitivity

The minimum detectable dose (MDD) of Sod1 typically less than 0.78U/mL. The MDD was determined by adding two standard deviations to the mean optical density value of twenty zero standard replicates and calculating the corresponding concentration.

Specificity

This assay has high sensitivity and excellent specificity for detection of Sod1.

No significant cross-reactivity or interference between Sod1 and analogues was observed.

Note:

Limited by current skills and knowledge, it is impossible for us to complete the cross-reactivity detection between Sod1 and all the analogues, therefore, cross reaction may still exist.

Precision

Intra-plate Precision

3 samples with low, middle and high level Sod1 were tested 20 times on one plate, respectively.

Intra-Assay: $CV \leq 5.3\%$

Inter-plate Precision

3 samples with low, middle and high level Sod1 were tested on 3 different plates, 20 replicates in each plate.

Inter-Assay: $CV \leq 8.9\%$

Recovery

Matrices listed below were spiked with certain level of Sod1 and the recovery rates were calculated by comparing the measured value to the expected amount of Sod1 in samples.

Sample	Average Recovery (%)	Range (%)
Cell Culture Media(n=5)	90	85-103
Serum(n=5)	92	88-100

Linearity

The linearity of the kit was assayed by testing samples spiked with appropriate concentration of Sod1 and their serial dilutions. The results were demonstrated by the percentage of calculated concentration to the expected.

/	/	Cell Culture Media(n=5)	Serum(n=5)
1:2	Average of Expected (%)	93	95
	Range (%)	85-102	90-106
1:4	Average of Expected (%)	96	96
	Range (%)	92-108	89-97
1:8	Average of Expected (%)	98	89
	Range (%)	95-110	80-102
1:16	Average of Expected (%)	94	93
	Range (%)	90-109	87-103

Trouble Shooting

Problem	Possible Cause	Solution
High Background	Insufficient washing	Sufficiently wash plates as required. Ensure appropriate duration and number of washes. Ensure appropriate volume of wash buffer in each well.
	Incorrect incubation procedure	Check whether the duration and temperature of incubation are set up as required.
	Cross-contamination of samples and reagents	Be careful of the operations that could cause cross-contamination. Use fresh reagents and repeat the tests.
No signal or weak signal	Incorrect use of reagents	Check the concentration and dilution ratio of reagents. Make sure to use reagents in proper order.
	Incorrect use of microplate reader	Warm the reader up before use. Make sure to set up appropriate main wavelength and correction wavelength.
	Insufficient colour reaction time	Optimum duration of colour reaction should be limited to 15-25 minutes.
	Read too late after stopping the colour reaction	Read the plate in 5 minutes after stopping the reaction.

	Matrix effect of samples	Use positive control.
Too much signal	Contamination of TMB substrate	Check if TMB substrate solution turns blue. Use new TMB substrate solution.
	Plate sealers reused	Use a fresh new sealer in each step of experiments.
	Protein concentration in sample is too high	Do pre-test and dilute samples in optimum dilution ratio.
Poor Duplicates	Uneven addition of samples	Check the pipette. Periodically calibrate the pipette.
	Impurities and precipitates in samples	Centrifuge samples before use.
	Inadequate mixing of reagents	Mix all samples and reagents well before loading.

*For research purposes only. Not for therapeutic or diagnostic purposes.