

Mouse Ghrelin ELISA Kit

Catalog NO: RK04315

version: 2.0

This package insert must be read in its entirety before using this product

1

Introduction

The kit is a sandwich enzyme immunoassay for in vitro quantitative measurement of Ghrelin in mouse serum, plasma, cell culture supernates , tissue homogenates and other biological fluids.

Principle of the Assay

This assay employs the quantitative sandwich enzyme immunoassay technique. An antibody specific for mouse Ghrelin has been pre-coated onto a microplate. Standards and samples are pipetted into the wells and any Ghrelin present is bound by the immobilized antibody. After washing away any unbound substances, an enzyme-linked polyclonal antibody specific for Ghrelin is added to the wells. Following a wash to remove any unbound antibody-enzyme reagent, a substrate solution is added to the wells and color develops in proportion to the amount of Ghrelin bound in the initial step. The color development is stopped and the intensity of the color is measured.

Material Provided & Storage Conditions

Store unopened kit at 2-8 °C. Do not use past kit expiration date. It is highly recommended to use the remaining reagents within 1 month provided this is prior to the expiration date of the kit.

Part	Size	Cat. No.	Storage of opened/reconstituted material
Antibody Coated Plate	8x12	RM94720	Return unused wells to the foil pouch containing the desiccant pack and store at ≤ -20 °C. Reseal along entire edge of zip-seal.
Standard Lyophilized	2	RM94721	Aliquot and store at ≤ -20 °C in a manual defrost freezer. Avoid repeated freeze-thaw cycles.
Concentrated Biotin Conjugate Antibody (100x)	1 x120ul	RM94722	May be stored for up to 6 month at -20 °C.*
Streptavidin-HRP Concentrated (100x)	1 x120ul	RM94723	May be stored for up to 6 month at 2-8 °C.*
Standard/Sample Diluent (R1)	1 x20mL	RM00023	May be stored for up to 6 month at 2-8 °C.*
Biotin-Conjugate Antibody Diluent (R2)	1 x10mL	RM00024	
Streptavidin-HRP Diluent(R3)	1 x10mL	RM00025	
Wash Buffer(25x)	1 x30mL	RM00026	
TMB Substrate	1 x10mL	RM00027	
Stop Solution	1 x10mL	RM00028	
Plate Sealers	4 Strips		
Specification	1		

Other Supplies Required

1. Microplate reader capable of measuring absorbance at 450 nm, with the correction wavelength set at 630 nm or 570 nm.
2. Pipettes and pipette tips.
3. Deionized or distilled water.
4. Squirt bottle, manifold dispenser, or automated microplate washer.
5. Incubator.
6. Test tubes for dilution of standards and samples.

Precautions

1. FOR RESEARCH USE ONLY. NOT FOR USE IN DIAGNOSTIC PROCEDURES.
2. Any variation in diluent, operator, pipetting technique, washing technique, incubation time or temperature, and kit age can cause variation in binding.
3. Variations in sample collection, processing, and storage may cause sample value differences.
4. Reagents may be harmful, if ingested, rinse it with an excess amount of tap water.
5. Stop Solution contains strong acid. Wear eye, hand, and face protection.
6. Apart from the standard of kits, other components should not be refrigerated.
7. Please perform simple centrifugation to collect the liquid before use.
8. Do not mix or substitute reagents with those from other lots or other sources.

9. Adequate mixing is very important for good result. Use a mini-vortexer at the lowest frequency.
10. Mix the sample and all components in the kits adequately, and use clean plastic container to prepare all of the diluent.
11. Both the sample and standard should be assayed in duplicate, and the sequence of the reagents should be added consistently.
12. Reuse of dissolved standard is not recommended.
13. The kit should not be used beyond the expiration date on the kit label.
14. The kit should be away from light when it is stored or incubated.
15. To reduce the likelihood of blood-borne transmission of infectious agents, handle all serum, plasma and other biological fluids in accordance with NCCLS regulations.
16. To avoid cross contamination, please use disposable pipette tips.
17. Please prepare all the kit components according to the Specification. If the kits will be used several times, please seal the rest strips and preserve with desiccants. Do use up within 2 months.
18. This assay is designed to eliminate interference by other factors present in biological samples.
19. Until all factors have been tested in this assay, the possibility of interference cannot be excluded.
20. The 48T kit is also suitable for the specification.

Sample Collection & Storage

The sample collection and storage conditions listed below are intended as general guidelines. Sample stability has not been evaluated.

Samples containing the correlated IgG as in this kit may interfere with this assay.

Cell Culture Supernates : Remove particulates by centrifugation. Assay immediately or aliquot and store samples at ≤ -20 °C. Avoid repeated freeze-thaw cycles.

Serum : Use a serum separator tube (SST) and allow samples to clot for 30 minutes at room temperature before centrifugation for 15 minutes at 1000 x g. Remove serum and assay immediately or aliquot and store samples at ≤ -20 °C. Avoid repeated freeze-thaw cycles.

Plasma : Collect plasma using EDTA or Heparin as an anticoagulant. Centrifuge for 15 minutes at 1000 × g within 30 minutes of collection. Assay immediately or aliquot and store samples at ≤ -20 °C. Avoid repeated freeze-thaw cycles. (Note: Citrate plasma has not been validated for use in this assay.)

Tissue homogenates: The preparation of tissue homogenates will vary depending upon tissue type. Tissues were rinsed in ice-cold PBS to remove excess blood thoroughly and weighed before homogenization. Minced the tissues to small pieces and homogenized them in fresh lysis buffer (different lysis buffer needs to be chosen based on subcellular location of the target protein) (e.g. 1mL lysis buffer is added in 200mg tissue sample) with a glass homogenizer on ice (Micro Tissue Grinders works, too). The resulting suspension was sonicated with an ultrasonic cell disrupter till the solution is clarified. Then, the homogenates were centrifuged for 5 minutes at 10,000×g. Collect the supernates and assay immediately or aliquot and

store at ≤ -20 °C.

Other biological fluids: Centrifuge samples for 20 minutes at 1,000×g. Collect the supernates and assay immediately or store samples in aliquot at -20°C or -80°C for later use. Avoid repeated freeze/thaw cycles.

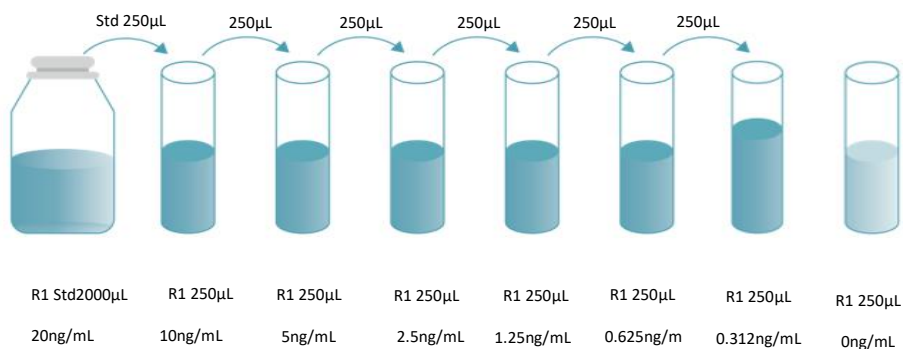
Note : It is suggested that all samples in a study be collected at the same time of the day. Avoid hemolytic and hyperlipidemia sample for Serum and Plasma.

Reagent Preparation

Bring all reagents to room temperature before use. If crystals have formed in the concentrate, Bring the reagent to room temperature and mix gently until the crystals have completely dissolved.

Standard - Reconstitute the Standard Lyophilized with 2.0 mL Standard/Sample Diluent(R1). This reconstitution produces a stock solution of 20 ng/mL. Mix the standard to ensure complete reconstitution and allow the standard to sit for a minimum of 15 minutes with gentle agitation prior to making dilutions.

Use the 20 ng/mL standard stock to produce a dilution series (below) with Standard/Sample Diluent(R1). Mix each tube thoroughly and change pipette tips between each transfer (recommended concentration for standard curve: (20 10 5.0 2.5 1.25 0.625 0.312 0ng/mL). Use diluted standards within 60 minutes of preparation.



Working Biotin Conjugate Antibody - Dilute 1:100 of Concentrated Biotin Conjugate Antibody (100x) with Biotin-Conjugate Antibody Diluent (R2) before use, for

example: Add 20 μL of Concentrated Biotin Conjugate Antibody (100x) to 1980 μL Biotin-Conjugate Antibody Diluent (R2) to prepare 2000 μL Working Biotin Conjugate Antibody Buffer.

Working Streptavidin-HRP - Dilute 1:100 of Concentrated Streptavidin-HRP (100x) with Streptavidin-HRP Diluent (R3) before use, for example: Add 20 μL of Concentrated Streptavidin-HRP (100x) to 1980 μL Streptavidin-HRP Diluent (R3) to prepare 2000 μL Working Streptavidin-HRP Buffer.

Wash Buffer - If crystals have formed in the concentrate, warm to room temperature and mix gently until the crystals have completely dissolved. Dilute 1:25 with double distilled or deionized water before use, for example : Add 20 mL of Wash Buffer Concentrate to 480 mL of deionized or distilled water to prepare 500 mL of Wash Buffer.

Assay Procedure

Bring all reagents and samples to room temperature before use. It is recommended that all standards, controls, and samples be assayed in duplicate.

1. Prepare all reagents, working standards, and samples as directed in the previous sections.
2. Remove excess microplate strips from the plate frame, return them to the foil pouch containing the desiccant pack, and reseal.
3. Add wash buffer 350 μ L/well, aspirate each well after holding 40 seconds, repeating the process two times for a total of three washes.
4. Add 100 μ L Standard/sample Diluent (R1) in a blank well.
5. Add 100 μ L different concentration of standard or sample in other wells, Cover with the adhesive strip provided. Incubate for 2 hours at 37°C. record the plate layout of standards and sample assay.
6. Prepare the Concentrated Biotin Conjugate Antibody (100X) Working Solution 15 minutes early before use.
7. Repeat the aspiration/wash as in step 3.
8. Add 100 μ L Working Biotin Conjugate Antibody in each wells, cover with new adhesive strip provided. Incubate for 1 hour at 37°C.
9. Prepare the Streptavidin-HRP Concentrated (100X) Working Solution 15minutes early before use.
10. Repeat the aspiration/wash as in step 3.
11. Add 100 μ L Working Streptavidin-HRP in each wells, cover with new adhesive strip provided. Incubate for 0.5 hour at 37°C.

12. Repeat the aspiration/wash as in step 3.
13. During the incubation, turn on the microplate reader to warm up.
14. Add 90 μ L TMB Substrate to each well. Incubate for 15-20 minutes at 37°C .Protect from light.
15. Add 50 μ L Stop Solution, determine the optical density of each well within 5 minutes, using a Microplate reader set to 450 nm. If wavelength correction is available, set to 570 nm or 630 nm. If wavelength correction is not available, subtract readings at 570 nm or 630 nm from the readings at 450 nm. This subtraction will correct for optical imperfections in the plate. Readings made directly at 450 nm without correction may be higher and less accurate.

Assay Procedure Summary

Prepare the standard and reagents



Add 100ul of standards or test samples to each well

Incubate for 2 hours at 37°C, then wash 3 times



Add 100ul Working Biotin Conjugate Antibody

Incubate for 1 hours at 37°C, then wash 3 times



Add 100ul Working Streptavidin-HRP

Incubate for 0.5 hour at 37°C, then wash 3 times



Add 90ul Substrate Solution

Incubate for 15-20 min at 37°C under dark condition



Add 50ul Stop Solution



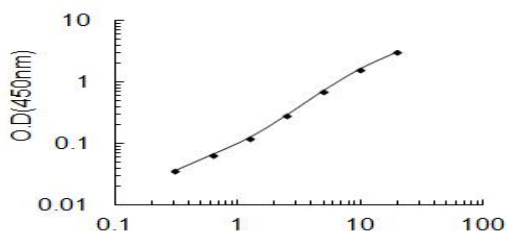
Detect the optical density within 5 minutes under 450nm.

Correction Wavelength set at 570nm or 630nm

Calculation of Results

1. Average the duplicate readings for each standard, control and sample, and subtract the average zero standard optical density (O.D.).
2. Create a standard curve by reducing the data using computer software capable of generating a four parameter logistic (4-PL) curve-fit. As an alternative, construct a standard curve by plotting the mean absorbance for each standard on the Y-axis against the concentration on the X-axis and draw a best fit curve through the points on a log/log graph. The data may be linearized by plotting the log of the Ghrelin concentrations versus the log of the O.D. on a linear scale, and the best fit line can be determined by regression analysis.
3. If samples have been diluted, the concentration read from the standard curve must be multiplied by the dilution factor.

Typical Data



mouse Ghrelin concentration (ng/mL)

The standard curves are provided for demonstration only. A standard curve should be generated for each set of Ghrelin assayed.

Sensitivity

The minimum detectable dose (MDD) of Ghrelin typically less than 0.164ng/mL. The MDD was determined by adding two standard deviations to the mean optical density value of twenty zero standard replicates and calculating the corresponding concentration.

Specificity

This assay has high sensitivity and excellent specificity for detection of Ghrelin.

No significant cross-reactivity or interference between Ghrelin and analogues was observed.

Note:

Limited by current skills and knowledge, it is impossible for us to complete the cross- reactivity detection between Ghrelin and all the analogues, therefore, cross reaction may still exist.

Precision

Intra-plate Precision

3 samples with low, middle and high level Ghrelin were tested 20 times on one plate, respectively.

Intra-Assay: CV<10%

Inter-plate Precision

3 samples with low, middle and high level Ghrelin were tested on 3 different plates, 8 replicates in each plate.

Inter-Assay: CV<15%

Recovery

Matrices listed below were spiked with certain level of Ghrelin and the recovery rates were calculated by comparing the measured value to the expected amount of

Ghrelin in samples.

Sample	Average Recovery (%)	Range (%)
Cell Culture Media(n=5)	98	95-102
Serum(n=5)	107	96-118

Linearity

The linearity of the kit was assayed by testing samples spiked with appropriate concentration of Ghrelin and their serial dilutions. The results were demonstrated by the percentage of calculated concentration to the expected.

/	/	Cell Culture Media(n=5)	Serum(n=5)
1:2	Average of Expected (%)	113	98
	Range (%)	99-119	85-111
1:4	Average of Expected (%)	114	89
	Range (%)	96-120	81-97
1:8	Average of Expected (%)	116	101
	Range (%)	89-120	92-110
1:16	Average of Expected (%)	98	102
	Range (%)	90-112	96-108

Trouble Shooting

*For research purposes only. Not for therapeutic or diagnostic purposes.