

Human PAI-1/Serpin E1 ELISA Kit

Catalog NO. : RK00133

version: 2.0

This package insert must be read in its entirety before
using this product

Introduction

The kit is a sandwich enzyme immunoassay for in vitro quantitative measurement of PAI-1/Serpin E1 in human serum, plasma, cell culture supernatants and other biological fluids.

Principle of the Assay

This assay employs the quantitative sandwich enzyme immunoassay technique. An antibody specific for human PAI-1/Serpin E1 has been pre-coated onto a microplate. Standards and samples are pipetted into the wells and any PAI-1/Serpin E1 present is bound by the immobilized antibody. After washing away any unbound substances, a biotin-conjugated detection antibody specific for human PAI-1/Serpin E1 is added to the wells. After incubating, an enzyme-linked streptavidin is added and binds to biotin. Following a wash to remove any unbound antibody-enzyme reagent, a substrate solution is added to the wells and color develops in proportion to the amount of PAI-1/Serpin E1 bound in the initial step. The color development is stopped, and the absorbance is measured.

Material Provided & Storage Conditions

Unopened kits can be stored at 2-8° C for 1 year, and opened products must be used within 1 month.

Part	Size	Cat. No.	Storage of opened/reconstituted material
Antibody Coated Plate	8×12	RM00560	Put the unused slats back in the aluminum foil bag with the desiccant and reseal them. They can be stored at 2-8° C for 1 month.
Standard Lyophilized	2 vials	RM00557	It is not recommended to use again after redissolving.
Concentrated Biotin Conjugate Antibody (30×)	1 × 400ul	RM00558	Store at 2-8° c for 1 month *
Streptavidin-HRP Concentrated (30 ×)	1 × 400ul	RM00559	Store at 2-8° c for 1 month *

Standard/Sample Diluent (R1)	1 × 20mL	RM00023	Store at 2-8° c for 1 month *
Biotin-Conjugate Antibody Diluent (R2)	1 × 12mL	RM00024	
Streptavidin-HRP Diluent (R3)	1 × 12mL	RM00025	
Wash Buffer (20x)	1 × 30mL	RM00026	
TMB Substrate	1 × 12mL	RM00027	
Stop Solution	1 × 6mL	RM00028	
Plate Sealers	4 Strips		
Specification	1		

Other Supplies Required

1. Microplate reader capable of measuring absorbance at 450 nm, with the correction wavelength set at 630 nm or 570 nm.
2. Pipettes and pipette tips.
3. Deionized or distilled water.
4. Squirt bottle, manifold dispenser, or automated microplate washer.
5. Incubator.
6. Test tubes for dilution of standards and samples.

Precautions

*** FOR RESEARCH USE ONLY. NOT FOR USE IN DIAGNOSTIC PROCEDURES.**

1. Any variation in diluent, operator, pipetting technique, washing technique, incubation time or temperature, and kit age can cause variation in binding.
2. Variations in sample collection, processing, and storage may cause sample value differences.
3. Reagents may be harmful, if ingested, rinse it with an excess amount of tap water.
4. Stop Solution contains strong acid. Wear eye, hand, and face protection.
5. Please perform simple centrifugation to collect the liquid before use.
6. Do not mix or substitute reagents with those from other lots or other sources.
7. Adequate mixing is particularly important for good result. Use a mini-vortexer at the lowest frequency.
8. Mix the sample and all components in the kits adequately, and use clean plastic container to prepare all diluents.
9. Both the sample and standard should be assayed in

duplicate, and reagents should be added in sequence in accordance with the requirement of the specification.

10. Reuse of dissolved standard is not recommended.
11. The kit should not be used beyond the expiration date on the kit label.
12. The kit should be away from light when it is stored or incubated.
13. To reduce the likelihood of blood-borne transmission of infectious agents, handle all serum, plasma, and other biological fluids in accordance with NCCLS regulations.
14. To avoid cross contamination, please use disposable pipette tips.
15. Please prepare all the kit components according to the Specification. If the kits will be used several times, please seal the rest strips and preserve with desiccants. Do use up within 2 months.
16. This assay is designed to eliminate interference by other factors present in biological samples.
17. Until all factors have been tested in this assay, the possibility of interference cannot be excluded.
18. The 48T kit is also suitable for the specification.

Sample Collection & Storage

The sample collection and storage conditions listed below are intended as general guidelines. Sample stability has not been evaluated.

Samples containing the correlated IgG as in this kit may interfere with this assay.

Cell Culture Supernatant: Remove particulates by centrifugation. Assay immediately or aliquot and store samples at $\leq -20^{\circ}\text{C}$. Avoid repeated freeze-thaw cycles.

Serum: Use a serum separator tube (SST) and allow samples to clot for 30 minutes at room temperature before centrifugation for 15 minutes at 1000 xg. Remove serum and assay immediately or aliquot and store samples at $\leq -20^{\circ}\text{C}$. Avoid repeated freeze-thaw cycles.

Plasma: Collect plasma using EDTA or Heparin as an anticoagulant. Centrifuge for 15 minutes at 1000 X g within 30 minutes of collection. Assay immediately or aliquot and store samples at $\leq -20^{\circ}\text{C}$. Avoid repeated freeze-thaw cycles. (Note: Citrate plasma has not been validated for use in this assay.)

Other biological fluids: Centrifuge samples for 20 minutes at $1,000\times g$. Collect the supernatants and assay immediately or store samples in aliquot at $-20^{\circ} C$ or $-80^{\circ} C$ for later use. Avoid repeated freeze-thaw cycles.

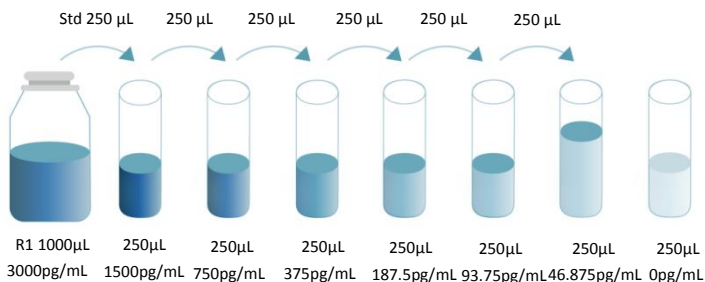
Note: It is suggested that all samples in one experiment be collected at the same time of the day. Avoid hemolytic and hyperlipidemia sample for serum and plasma.

Reagent Preparation

Bring all reagents to room temperature before use. If crystals have formed in the concentrate, Bring the reagent to room temperature and mix gently until the crystals have completely dissolved.

Standard – Reconstitute the Standard Lyophilized with 1.0 mL Standard/Sample Diluent(R1). This reconstitution produces a stock solution of 3000pg/mL. Mix the standard to ensure complete reconstitution and allow the standard to sit for a minimum of 15 minutes with gentle agitation prior to making dilutions.

Use the 3000pg/mL standard stock to produce a dilution series (below) with Standard/Sample Diluent(R1). Mix each tube thoroughly and change pipette tips between each transfer (recommended concentration for standard curve: 3000, 1500, 750, 375, 187.5, 93.75, 46.875, 0pg/mL). Use diluted standards within 60 minutes of preparation.



Working Biotin Conjugate Antibody – Dilute 1:30 of Concentrated Biotin Conjugate Antibody (30x) with Biotin-Conjugate Antibody Diluent (R2) before use. For example: Add 66 µL of Concentrated Biotin Conjugate Antibody (30x) to 1914 µL Biotin-Conjugate Antibody Diluent (R2) solution for the preparation of 1980 µL Working Biotin-Conjugate Antibody Buffer.

Working Streptavidin-HRP – Dilute 1:30 of Concentrated Streptavidin-HRP (30x) with Streptavidin-HRP Diluent (R3)

before use. For example: Add 66 μ L of Concentrated Streptavidin-HRP (30x) to 1914 μ L Streptavidin-HRP Diluent (R3) to prepare 1980 μ L Working Streptavidin-HRP Buffer.

Wash Buffer – If crystals have formed in the concentrate, warm to room temperature and mix gently until the crystals have completely dissolved. Dilute 1:20 with double distilled or deionized water before use. For example : Add 20 mL of Wash Buffer Concentrate to 380 mL of deionized or distilled water to prepare 400 mL of Wash Buffer.

Assay Procedure

Bring all reagents and samples to room temperature before use. It is recommended that all standards, controls, and samples be assayed in duplicate.

1. Prepare all reagents, working standards, and samples as directed in the previous sections.
2. Remove excess microplate strips from the plate frame, return them to the foil pouch containing the desiccant pack, and reseal.
3. Add wash buffer 350 μ L/well, aspirate each well after holding 40 seconds, repeating the process two times for a total of three washes.
4. Add 100 μ L Standard/sample Diluent (R1) in a blank well.
5. Add 100 μ L different concentration of standard or sample in other wells, Cover with the adhesive sealer provided. Incubate for 2 hours at 37°C. Record the plate layout of standards and sample assay.
6. Prepare the Concentrated Biotin Conjugate Antibody (30x) Working Solution 15 minutes early before use.
7. Repeat the aspiration/wash as in step 3.
8. Add 100 μ L Working Biotin Conjugate Antibody in each well, cover with new adhesive sealer provided. Incubate for 1 hour at 37°C.

9. Prepare the Streptavidin-HRP Concentrated (30x) Working Solution 15 minutes early before use.
10. Repeat the aspiration/wash as in step 3.
11. Add 100 μ L Working Streptavidin-HRP in each well, cover with new adhesive sealer provided. Incubate for 0.5 hour at 37°C.
12. Repeat the aspiration/wash as in step 3.
13. During the incubation, turn on the microplate reader to warm up for 30 minutes before measuring.
14. Add 100 μ L TMB Substrate to each well. Incubate for 15-20 minutes at 37°C. Protect from light.
15. Add 50 μ L Stop Solution, determine the optical density of each well within 5 minutes, using a Microplate reader set to 450 nm. If wavelength correction is available, set to 570 nm or 630 nm. If wavelength correction is not available, subtract readings at 570 nm or 630 nm from the readings at 450 nm. This subtraction will correct for optical imperfections in the plate. Readings made directly at 450 nm without correction may cause higher value and less accurate result.

Assay Procedure Summary

Prepare the standard and reagents

Wash 3 times



Add 100ul of standards or test samples to each well

Incubate for 2 hours at 37°C, then wash 3 times



Add 100ul Working Biotin Conjugate Antibody

Incubate for 1 hours at 37°C, then wash 3 times



Add 100ul Working Streptavidin-HRP

Incubate for 0.5 hour at 37°C, then wash 3 times



Add 100ul Substrate Solution

Incubate for 15-20 min at 37°C under dark condition



Add 50ul Stop Solution



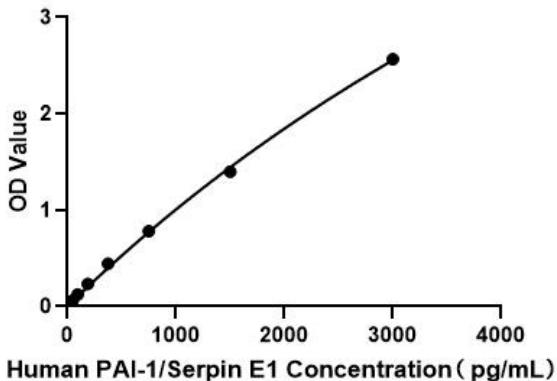
Detect the optical density within 5 minutes under 450nm.

Correction Wavelength set at 570nm or 630nm

Calculation of Results

1. Average the duplicate readings for each standard, control and sample, and subtract the average zero standard optical density (O.D.).
2. Create a standard curve by reducing the data using computer software capable of generating a four-parameter logistic (4-PL) curve-fit. As an alternative, construct a standard curve by plotting the mean absorbance for each standard on the Y-axis against the concentration on the X-axis and draw a best fit curve through the points on a log/log graph. The data may be linearized by plotting the log of the PAI-1/Serpin E1 concentrations versus the log of the O.D. on a linear scale, and the best fit line can be determined by regression analysis.
3. If samples have been diluted, the concentration read from the standard curve must be multiplied by the dilution factor.

Typical Data



The standard curves are provided for demonstration only. A standard curve should be generated for each set of PAI-1/Serpin E1 assayed.

Detection Range

46. 875–3000pg/mL

Sensitivity

The minimum detectable dose (MDD) of PAI-1/Serpin E1 typically less than 23.44pg/mL. The MDD was determined by adding two standard deviations to the mean optical density value of twenty zero standard replicates and calculating the corresponding concentration.

Specificity

This assay recognizes both recombinant and natural human PAI-1/Serpin E1. The factors listed below were prepared at 50ng/ml and assayed for cross-reactivity. No significant cross-reactivity was observed with the following:

Recombinant human:

tPa

uPAR

uPA

Vitronectin

Serpin A1

Serpin A3

Serpin A4

Serpin A5

Serpin C1

Serpin D1

Serpin E2

Serpin F2

Serpin G1

Note:

Limited by current skills and knowledge, it is impossible for us to complete the cross-reactivity detection between PAI-1/Serpin E1 and all the analogues, therefore, cross reaction may still exist.

Precision

Intra-plate Precision

The three samples with known concentrations were repeated 20 times on the same board to calculate the coefficient of variation (CV) for the concentrations.

Intra-Assay: CV<10%

Inter-plate Precision

The coefficient of variation (CV) of three known concentrations was calculated by 20 tests of two kits on each of the three samples.

Inter-Assay: CV<15%

Sample	Intra-Assay Precision			Inter-Assay Precision		
	1	2	3	1	2	3
n	20	20	20	20	20	20
Mean (pg/mL)	102	1560	2890	190	1490	2840
Standard deviation	4.59	71.76	118.49	9.5	78.97	173.24
CV (%)	4.5	4.6	4.1	5.0	5.3	6.1

Recovery

Matrices listed below were spiked with certain level of PAI-1/Serpin E1 and the recovery rates were calculated by comparing the measured value to the expected amount of PAI-1/Serpin E1 in samples.

Sample	Average Recovery (%)	Range (%)
Cell Culture Media(n=5)	92	83-103
Serum(n=5)	96	81-108

Linearity

The linearity of the kit was assayed by testing samples spiked with appropriate concentration of PAI-1/Serpin E1 and their serial dilutions. The results were demonstrated by the percentage of calculated concentration to the expected.

/	/	Cell Culture Media (n=5)	Serum (n=5)
1:2	Average of Expected (%)	95	90
	Range (%)	85-102	80-99
1:4	Average of Expected (%)	100	90
	Range (%)	92-108	85-101
1:8	Average of Expected (%)	100	98
	Range (%)	95-110	96-109
1:16	Average of Expected (%)	103	96
	Range (%)	90-109	84-106

Trouble Shooting

Problem	Possible Cause	Solution
High Background	Insufficient washing	Sufficiently wash plates as required. Ensure appropriate duration and number of washes. Ensure appropriate volume of wash buffer in each well.
	Incorrect incubation procedure	Check whether the duration and temperature of incubation are set up as required.
	Cross-contamination of samples and reagents	Be careful of the operations that could cause cross-contamination. Use fresh reagents and repeat the tests.
No signal or weak signal	Incorrect use of reagents	Check the concentration and dilution ratio of reagents. Make sure to use reagents in proper order.
	Incorrect use of microplate reader	Warm the reader up before use. Make sure to set up appropriate main wavelength and correction wavelength.
	Insufficient colour reaction time	Optimum duration of colour reaction should be limited to 15-25 minutes.
	Read too late after stopping the colour reaction	Read the plate in 5 minutes after stopping the reaction.
	Matrix effect of samples	Use positive control.

Too much signal	Contamination of TMB substrate	Check if TMB substrate solution turns blue. Use new TMB substrate solution.
	Plate sealers reused	Use a fresh new sealer in each step of experiments.
	Protein concentration in sample is too high	Do pre-test and dilute samples in optimum dilution ratio.
Poor Duplicates	Uneven addition of samples	Check the pipette. Periodically calibrate the pipette.
	Impurities and precipitates in samples	Centrifuge samples before use.
	Inadequate mixing of reagents	Mix all samples and reagents well before loading.

*For research purposes only. Not for therapeutic or diagnostic purposes.