

## Mouse B Cells Panel

Catalog Number: RK40010

Size: 1 Box

### ◆ Description

The 2-fluorescence Mouse B Cells Panel has been designed for identify and phenotype B cells in Mouse blood or tissue samples.

ABflo® multi-fluorescence panel RK40010 covers the core CD markers of CD3 and CD19. Our plots showed clear subgroups of CD3<sup>-</sup>CD19<sup>+</sup> B cells (cite figures).

### ◆ Applications

FC

### ◆ Reactivity

Mouse

### ◆ Components

Target	Catalog No.	Fluorochrome	Ex/Em (nm)	Isotype	Clone	Size	Vol. Per Test
CD3	A23322	FITC	491/516	Armenian Hamster Ig G	ACC0001	100ug	1 µL
CD19	A24101	ABflo® 647	648/664	Rabbit IgG	ARC5140-01-ABf647	100T	5 µL

Note:

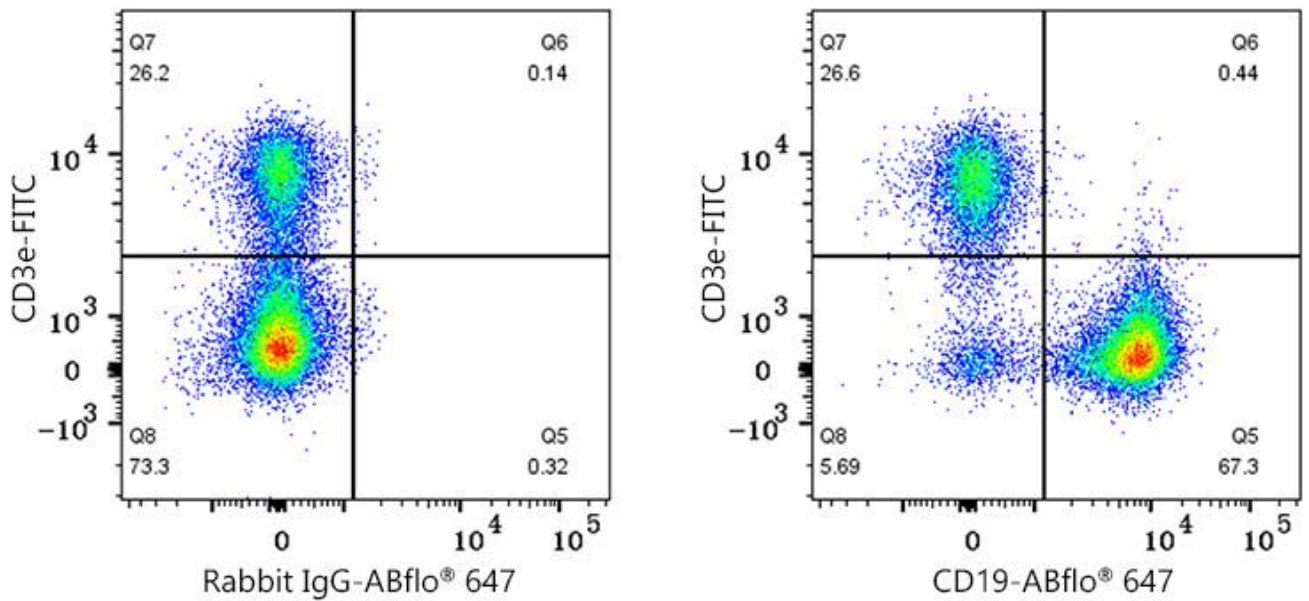
This reagent has been pre-diluted for use at the recommended Volume per Test. We typically use  $1 \times 10^6$  cells in a

100  $\mu$ l experimental sample (a test).

◆ **Storage**

Store at 4°C. Avoid freeze/thaw cycles.

◆ **Validation Data**



Multicolor flow cytometry panel to identify Mouse B cells. C57 BL/6 mouse splenocytes were surface stained with FITC Anti-Mouse CD3e mAb (A23322, 1  $\mu$ L/Test), ABflo<sup>®</sup> 647 Rabbit anti-Mouse CD19 mAb (A24101, 5  $\mu$ L/Test). All antibodies are validated for Flow cytometry. B cells are defined as CD3<sup>+</sup>CD19<sup>+</sup>.