

Mouse T Cells Panel

Catalog Number: RK40009

Size: 1 Box

◆ Description

The 3-fluorescence Mouse T Cells Panel has been designed for identify and phenotype T cells in Mouse blood or tissue samples.

ABflo® multi-fluorescence panel RK40009 covers the core CD markers of CD3e, CD4 and CD8. Our plots showed clear subgroups of CD3⁺ T cells, CD4⁺CD8⁻ T cells and CD4⁻CD8⁺ T cells (cite figures).

◆ Applications

FC

◆ Reactivity

Mouse

◆ Components

| Target | Catalog No. | Fluorochrome | Ex/Em (nm) | Isotype | Clone | Size | Vol. Per Test |
|--------|-------------|--------------|------------|----------------------|--------------------|--------|---------------|
| CD3e | A23322 | FITC | 491/516 | Armenian Hamster IgG | ACC0001 | 100 µg | 1 µL |
| CD4 | A25941 | ABflo®450 | 406/445 | Rabbit IgG | ARC64069-01-ABf450 | 100T | 5 µL |
| CD8 | A25944 | ABflo®700 | 690/713 | Rabbit IgG | ARC60677-03-ABf700 | 100T | 5 µL |

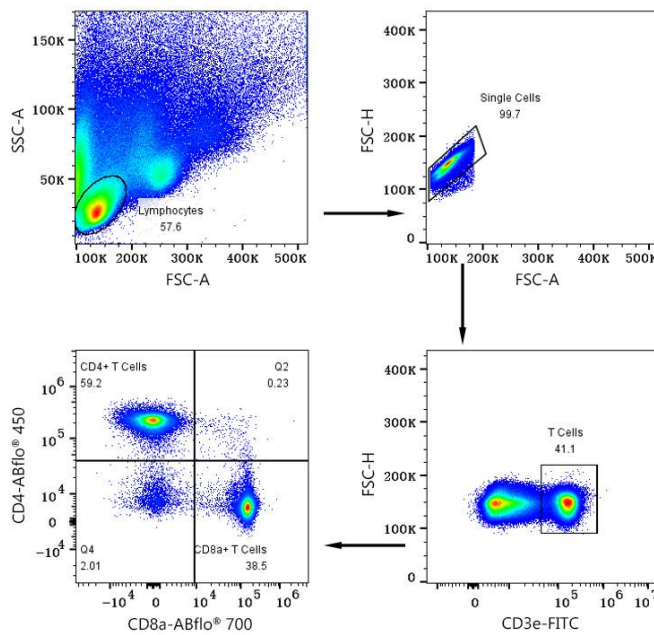
Note:

This reagent has been pre-diluted for use at the recommended Volume per Test. We typically use 1×10^6 cells in a 100 μ l experimental sample (a test).

◆ Storage

Store at 4°C. Avoid freeze/thaw cycles.

◆ Validation Data



Multicolor flow cytometry panel to identify Mouse T cells subsets. BALB/c mouse splenocytes were surface stained with FITC Anti-Mouse CD3e mAb (A23322, 1 μ L/Test), ABflo® 450 Rabbit anti-Mouse CD4 mAb (A25941, 5 μ L/Test), ABflo® 700 Rabbit anti-Mouse CD8a mAb (A25944, 5 μ L/Test). All antibodies are validated for Flow cytometry. T cells are defined as CD3⁺; CD4 T cells are defined as CD4⁺CD8⁻; CD8 T cells are defined as CD4⁻CD8⁺.