

Human TBNK Panel

Catalog Number: RK40008

Size: 1 Box

◆ Description

The 7-fluorescence Human TBNK Panel has been designed for reliable identification of human T, B, and NK lymphocyte populations in human blood or tissue samples.

ABflo® multi-fluorescence panel RK40008 covers the core CD markers of CD45, CD3, CD4, CD8, CD19, CD56 and CD16. Our plots showed clear subgroups of CD4⁺ lymphocytes, CD8⁺ T lymphocytes, CD3⁻CD19⁺ B cells, CD56^{bright}CD16^{neg}, CD56^{bright}CD16^{dim}, CD56^{dim}CD16^{pos}, CD56^{neg}CD16^{pos} NK cells and CD3⁺CD56⁺ NKT cells (cite figures).

◆ Applications

FC

◆ Reactivity

Human

◆ Components

Target	Catalog No.	Fluorochrome	Ex/Em (nm)	Isotype	Clone	Size	Vol. Per Test
CD45	A25195	ABflo®450	406/445	Rabbit IgG	ARC5024-04-ABf450	100T	5 µL
CD3	A26283	ABflo®488	491/516	Rabbit IgG	ARC68274-01-ABf488	100T	5 µL
CD4	A26218	ABflo®610	421/612	Rabbit IgG	ARC5142-01-02-ABf610	100T	5 µL
CD8	A26731	ABflo® 500	410/501	Rabbit IgG	ARC55248-05-ABf500	100T	5 µL

CD19	A27165	ABflo® 700	690/713	Rabbit IgG	ARC57915-05-ABf700	100T	5 µL
CD56	A26932	APC	650/660	Rabbit IgG	ARC71418-01-APC	100T	5 µL
CD16	A24974	PE	565/574	Rabbit IgG	ARC59985-02-PE	100T	5 µL

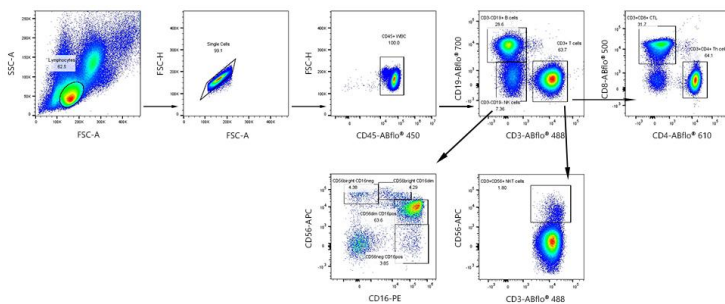
Note:

This reagent has been pre-diluted for use at the recommended Volume per Test. We typically use 1×10^6 cells in a 100 µl experimental sample (a test).

◆ **Storage**

Store at 4°C. Avoid freeze/thaw cycles.

◆ **Validation Data**



Multicolor flow cytometry panel to identify Human TBNK cell subsets. Human PBMC were surface stained with ABflo® 450 Rabbit anti-Human CD45 mAb (A25195,5 µL/Test), ABflo® 488 Rabbit anti-Human CD3 mAb (A26283,5 µL/Test), ABflo® 610 Rabbit anti-Human CD4 mAb (A26218,5 µL/Test), ABflo® 500 Rabbit anti-Human CD8A mAb (A26731,5 µL/Test), ABflo® 700 Rabbit anti-Human/Monkey CD19 mAb (A27165,5 µL/Test), APC Rabbit anti-Human CD56/NCAM1 mAb (A26932,5 µL/Test), PE Rabbit anti-Human CD16 mAb (A24974,5 µL/Test). All antibodies are validated for Flow cytometry. CD4⁺ T lymphocytes are defined as CD3⁺CD4⁺; CD8⁺ T lymphocytes are defined as CD3⁺CD8⁺; B cells are CD3⁻CD19⁺; NK cells are defined as CD56^{bright}CD16^{neg}, CD56^{bright}CD16^{dim}, CD56^{dim}CD16^{pos}, CD56^{neg}CD16^{pos}; NKT cells are CD3⁺CD56⁺.