

Human T Cells Panel

Catalog Number: RK40007

Size: 1 Box

◆ Description

The 4-fluorescence Human T Cells Panel has been designed for identify and phenotype T cells in Human blood or tissue samples.

ABflo® multi-fluorescence panel RK40007 covers the core CD markers of CD45, CD3, CD45 and CD8. Our plots showed clear subgroups of CD4⁺ lymphocytes, CD3⁺ T lymphocytes, CD4⁺CD8⁻ T cells, and CD4⁻CD8⁺ T cells (cite figures).

◆ Applications

FC

◆ Reactivity

Human

◆ Components

| Target | Catalog No. | Fluorochrome | Ex/Em (nm) | Isotype | Clone | Size | Vol. Per Test |
|--------|-------------|-------------------|------------|------------|----------------------|------|---------------|
| CD45 | A25823 | ABflo® 610 | 421/612 | Rabbit IgG | ARC5024-ABflo610 | 100T | 5 µL |
| CD3 | A26283 | ABflo® 488 | 491/516 | Rabbit IgG | ARC68274-ABflo488 | 100T | 5 µL |
| CD4 | A26596 | PE | 565/574 | Rabbit IgG | ARC70737-PE | 100T | 5 µL |
| CD8 | A26221 | PerCP/Cyanine 5.5 | 482/482 | Rabbit IgG | ARC55248-PerCP-Cy5.5 | 100T | 5 µL |

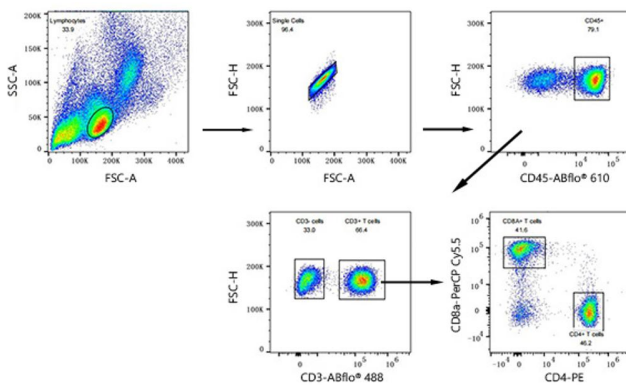
Note:

This reagent has been pre-diluted for use at the recommended Volume per Test. We typically use 1×10^6 cells in a 100 μ l experimental sample (a test).

◆ **Storage**

Store at 4°C. Avoid freeze/thaw cycles.

◆ **Validation Data**



Multicolor flow cytometry panel to identify human T cells. PBMCs were surface stained with ABflo® 610 Rabbit anti-Human CD45 mAb (A25823,5 μ L/Test), ABflo® 488 Rabbit anti-Human CD3 mAb (A26283,5 μ L/Test), PE Rabbit anti-Human CD4 mAb (A26596,5 μ L/Test) and PerCP/Cyanine5.5 Rabbit anti-Human/Monkey CD8a mAb (A26221,5 μ L/Test). All antibodies are validated for Flow cytometry. CD45 lymphocytes are defined as CD45⁺; CD3 T lymphocytes are defined as CD3⁺; CD4 T cells are defined as CD4⁺CD8⁻; CD8 T cells are defined as CD4⁻CD8⁺.