

Human Activated T Cell Panel

Catalog Number: RK40006

Size: 1 Box

◆ Description

The 5-fluorescence Human Activated T Cell Panel has been designed for identify and phenotype CD3⁺ activated T cells in Human blood or tissue samples.

ABflo[®] multi-fluorescence panel RK40006 covers the core CD markers of CD25, CD3, CD4, CD8 and CD69. Our plots showed clear subgroups of CD3⁺ T cells, CD4⁺CD3⁺ T cells, CD8⁺CD3⁺ T cells and CD25⁺CD69⁺ activated T cells (cite figures).

◆ Applications

FC

◆ Reactivity

Human

◆ Components

Target	Catalog No.	Fluorochrome	Ex/Em (nm)	Isotype	Clone	Size	Vol. Per Test
CD25	A26773	PE	565/574	Rabbit IgG	ARC58045-PE	100T	5 µL
CD3	A25189	ABflo [®] 450	406/445	Mouse IgG2a	AMC50002-ABf450	100T	5 µL
CD4	A26218	ABflo [®] 610	421/612	Rabbit IgG	ARC5142-01-02	100T	5 µL
CD8	A23345	ABflo [®] 488	491/516	Rabbit IgG	ARC55248-ABf488	100T	5 µL
CD69	A25892	ABflo [®] 647	648/664	Rabbit IgG	ARC68505-ABflo647	100T	5 µL

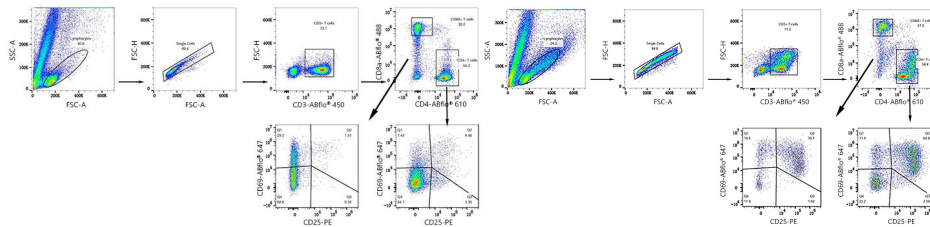
Note:

This reagent has been pre-diluted for use at the recommended Volume per Test. We typically use 1×10^6 cells in a 100 μ l experimental sample (a test).

◆ Storage

Store at 4°C. Avoid freeze/thaw cycles.

◆ Validation Data



Multicolor flow cytometry panel to identify human activated T cells. Unstimulated (left panel) and stimulated (right panel) PBMCs were surface stained with ABflo® 450 Mouse anti-Human CD3 mAb (A25189,5 μ L/Test), ABflo® 610 Rabbit anti-Human CD4 mAb (A26218,5 μ L/Test), ABflo® 488 Rabbit anti-Human/Monkey CD8a mAb (A23345,5 μ L/Test), PE Rabbit anti-Human CD25 mAb (A26773,5 μ L/Test) and ABflo® 647 Rabbit anti-Human CD69 mAb (A25892,5 μ L/Test). All antibodies are validated for Flow cytometry. CD3 T lymphocytes are defined as CD3⁺; CD4 T cells are defined as CD4⁺CD3⁺; CD8 T cells are defined as CD8⁺CD3⁺; activated T cells are defined as CD25⁺CD69⁺.