

# Human Treg Panel

Catalog Number: RK40005

Size: 1 Box

## ◆ Description

The 3-fluorescence Human Treg Panel has been designed for identify and phenotype CD4<sup>+</sup> T regulatory cells in Human blood or tissue samples.

ABflo<sup>®</sup> multi-fluorescence panel RK40005 covers the core CD markers of CD4, CD25 and CD127. Our plots showed clear subgroups of CD4<sup>+</sup> T cells, and CD25<sup>+</sup>CD127<sup>low/-</sup> Treg cells (cite figures).

## ◆ Applications

FC

## ◆ Reactivity

Human

## ◆ Components

Target	Catalog No.	Fluorochrome	Ex/Em (nm)	Isotype	Clone	Size	Vol. Per Test
CD4	A25282	ABflo <sup>®</sup> 594	588/604	Rabbit IgG	ARC5142-A Bf594	100T	5 µL
CD25	A26774	APC	650/660	Rabbit IgG	ARC58045- APC	100T	5 µL
CD127	A25161	ABflo <sup>®</sup> 488	491/516	Rabbit IgG	ARC66004- ABflo488	100T	5 µL

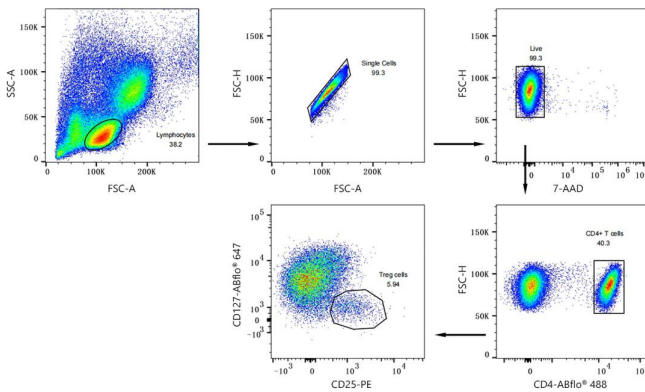
Note:

This reagent has been pre-diluted for use at the recommended Volume per Test. We typically use  $1 \times 10^6$  cells in a 100  $\mu$ l experimental sample (a test).

◆ **Storage**

Store at 4°C. Avoid freeze/thaw cycles.

◆ **Validation Data**



Multicolor flow cytometry panel to identify human regulatory T cells. PBMCs were surface stained with ABflo® 594 Rabbit anti-Human CD4 mAb (A25282,5  $\mu$ L/Test), APC Rabbit anti-Human CD25 mAb (A26774,5  $\mu$ L/Test) and ABflo® 488 Rabbit anti-Human CD127/IL-7R $\alpha$  mAb (A25161,5  $\mu$ L/Test). All antibodies are validated for Flow cytometry. CD4 T cells are defined as CD4+; regulatory T cells are defined as CD25+CD127low/-.