

Mouse Treg Panel

Catalog Number: RK40004

Size: 1 Box

◆ Description

The 3-fluorescence Mouse Treg Panel has been designed for identify and phenotype CD4+ T regulatory cells in Mouse blood or tissue samples.

ABflo® multi-fluorescence panel RK40004 covers the core CD markers of FOXP3, CD4 and CD25. Our plots showed clear subgroups of CD4⁺ T cells, and CD25⁺ FOXP3⁺ Treg cells (cite figures).

◆ Applications

FC

◆ Reactivity

Mouse

◆ Components

Target	Catalog No.	Fluorochrome	Ex/Em (nm)	Isotype	Clone	Size	Vol. Per Test
FOXP3	A26227	PE	565/574	Rabbit IgG	ARC68296-PE	100T	5 µL
CD4	A24722	ABflo® 594	588/604	Rabbit IgG	ARC64069-ABflo594	100T	5 µL
CD25	A23808	ABflo® 647	648/664	Rabbit IgG	ARC54525-ABf647	100T	5 µL

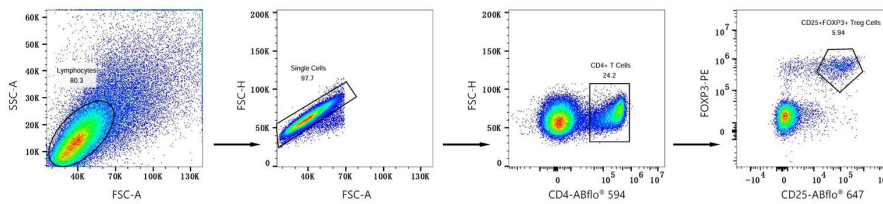
Note:

This reagent has been pre-diluted for use at the recommended Volume per Test. We typically use 1×10^6 cells in a 100 μ l experimental sample (a test).

◆ **Storage**

Store at 4°C. Avoid freeze/thaw cycles.

◆ **Validation Data**



Multicolor flow cytometry panel to identify mouse regulatory T cells. C57 BL/6 mouse splenocytes were surface-stained with ABflo® 594 Rabbit anti-Mouse CD4 mAb (A24722,5 μ L/Test) and ABflo® 647 Rabbit anti-Mouse CD25 mAb (A23808,5 μ L/Test), and then intracellularly-stained with PE Rabbit anti-Mouse FOXP3 mAb (A26227,5 μ L/Test). ALL antibodies are validated for Flow cytometry. CD4 T cells are defined as CD4⁺; Regulatory T cells are defined as CD25⁺ FOXP3⁺.