

Mouse T/NK Panel

Catalog Number: RK40003

Size: 1 Box

◆ Description

The 4-fluorescence Mouse T/NK panel has been designed for reliable identification of mouse T and NK lymphocyte populations in mouse blood or tissue samples.

ABflo® multi-fluorescence panel RK40003 covers the core CD markers of CD3e, CD4, CD8a, and CD161c/NK1.1. Our plots showed clear subgroups of CD3e⁺ T cells, CD4⁺ Th cells, CD8a⁺ CTL cells, and CD161c/NK1.1⁺ NK cells (cite figures).

◆ Applications

FC

◆ Reactivity

Mouse

◆ Components

Target	Catalog No.	Fluorochrome	Ex/Em (nm)	Isotype	Clone	Size	Vol. Per Test
CD3e	A23322	FITC	491/516	Armenian Hamster IgG	ACC0001	100 µg	1 µL
CD4	A24721	ABflo® 647	648/664	Rabbit IgG	ARC64069-ABflo647	200 T	5 µL
CD8a	A23905	ABflo® 594	588/604	Rabbit IgG	ARC60677-ABflo594	200 T	5 µL
CD161c /NK1.1	A24107	PE	565/574	Rabbit IgG	ARC57668-PE	200 T	5 µL

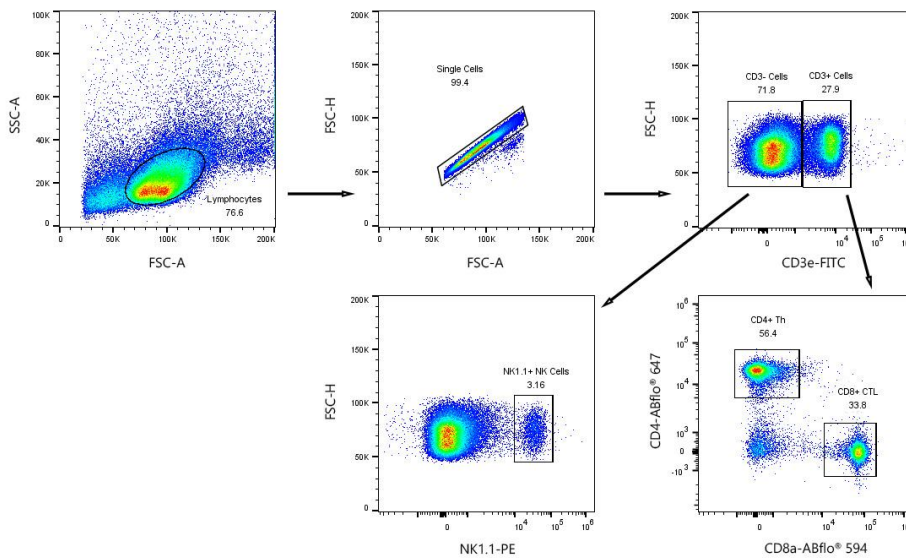
Note:

This reagent has been pre-diluted for use at the recommended Volume per Test. We typically use 1×10^6 cells in a 100 μ l experimental sample (a test).

◆ **Storage**

Store at 4°C. Avoid freeze/thaw cycles.

◆ **Validation Data**



Multicolor flow cytometry panel to identify mouse T cells, NK cells. Mouse splenocytes were stained with anti-mouse CD3e FITC, CD4 ABflo® 647, CD8a ABflo® 594, NK1.1 PE. All antibodies are validated for cytometry. CD4 T cells are defined as CD3e⁺ CD4⁺; CD8 T cells are defined as CD3e⁺ CD8a⁺; NK cells are CD3⁻ NK1.1⁺.