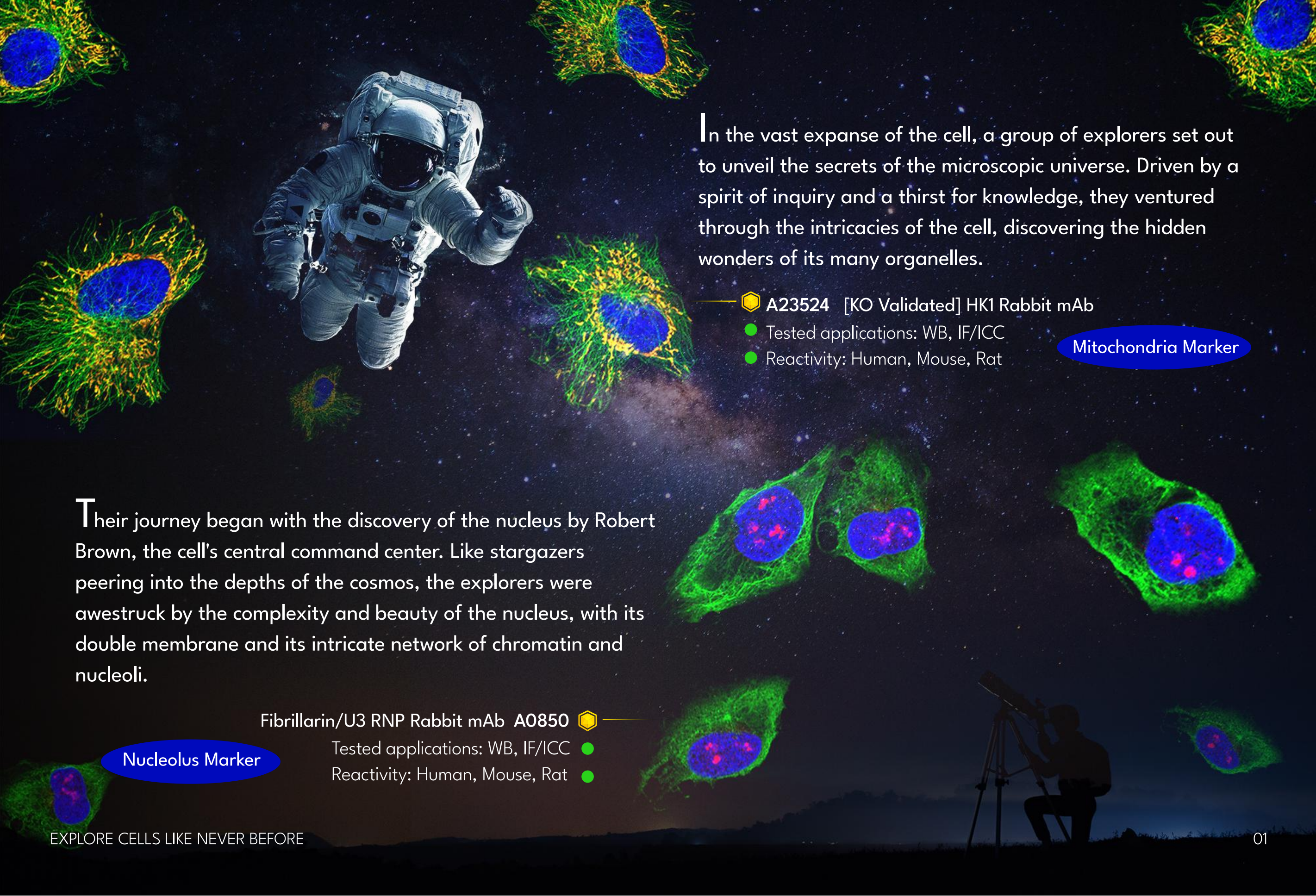




**BECOME AN ASTRONAUT OF THE
MICROSCOPIC WORLD:
EXPLORE CELLS LIKE NEVER BEFORE**

Discover the Hidden Universe of Cells with ABclonal IF Antibodies




In the vast expanse of the cell, a group of explorers set out to unveil the secrets of the microscopic universe. Driven by a spirit of inquiry and a thirst for knowledge, they ventured through the intricacies of the cell, discovering the hidden wonders of its many organelles.

—  **A23524** [KO Validated] HK1 Rabbit mAb

- Tested applications: WB, IF/ICC
- Reactivity: Human, Mouse, Rat

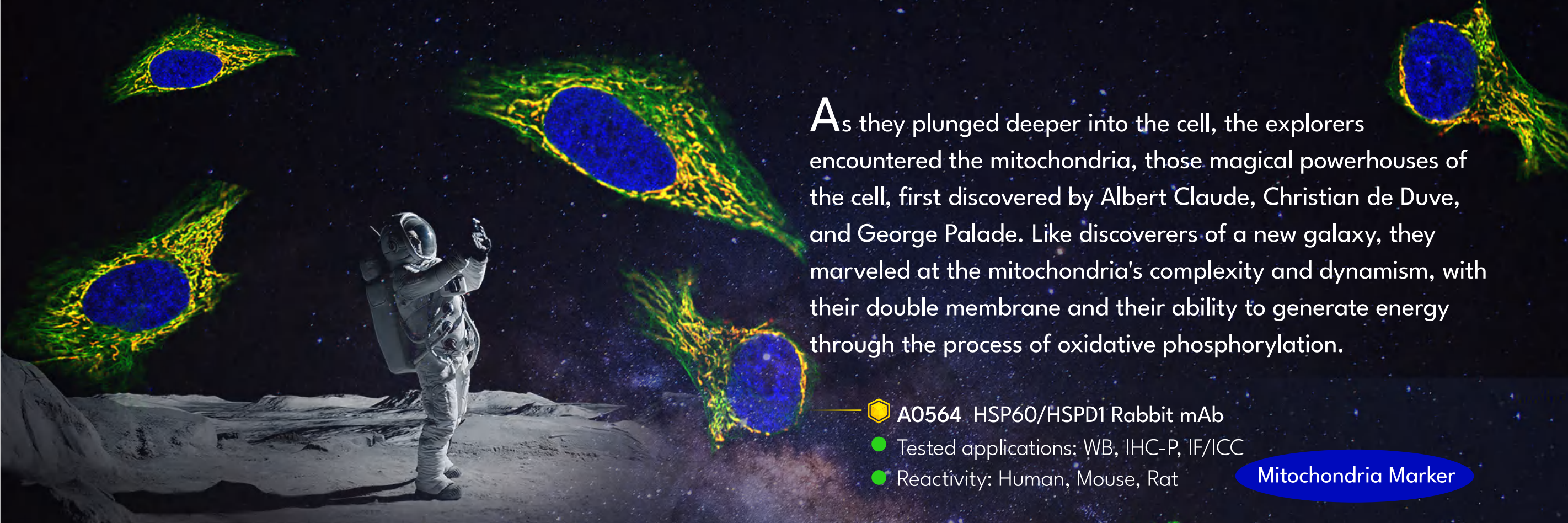
Mitochondria Marker

Their journey began with the discovery of the nucleus by Robert Brown, the cell's central command center. Like stargazers peering into the depths of the cosmos, the explorers were awestruck by the complexity and beauty of the nucleus, with its double membrane and its intricate network of chromatin and nucleoli.

Fibrillarin/U3 RNP Rabbit mAb **A0850** 

- Tested applications: WB, IF/ICC
- Reactivity: Human, Mouse, Rat

Nucleolus Marker

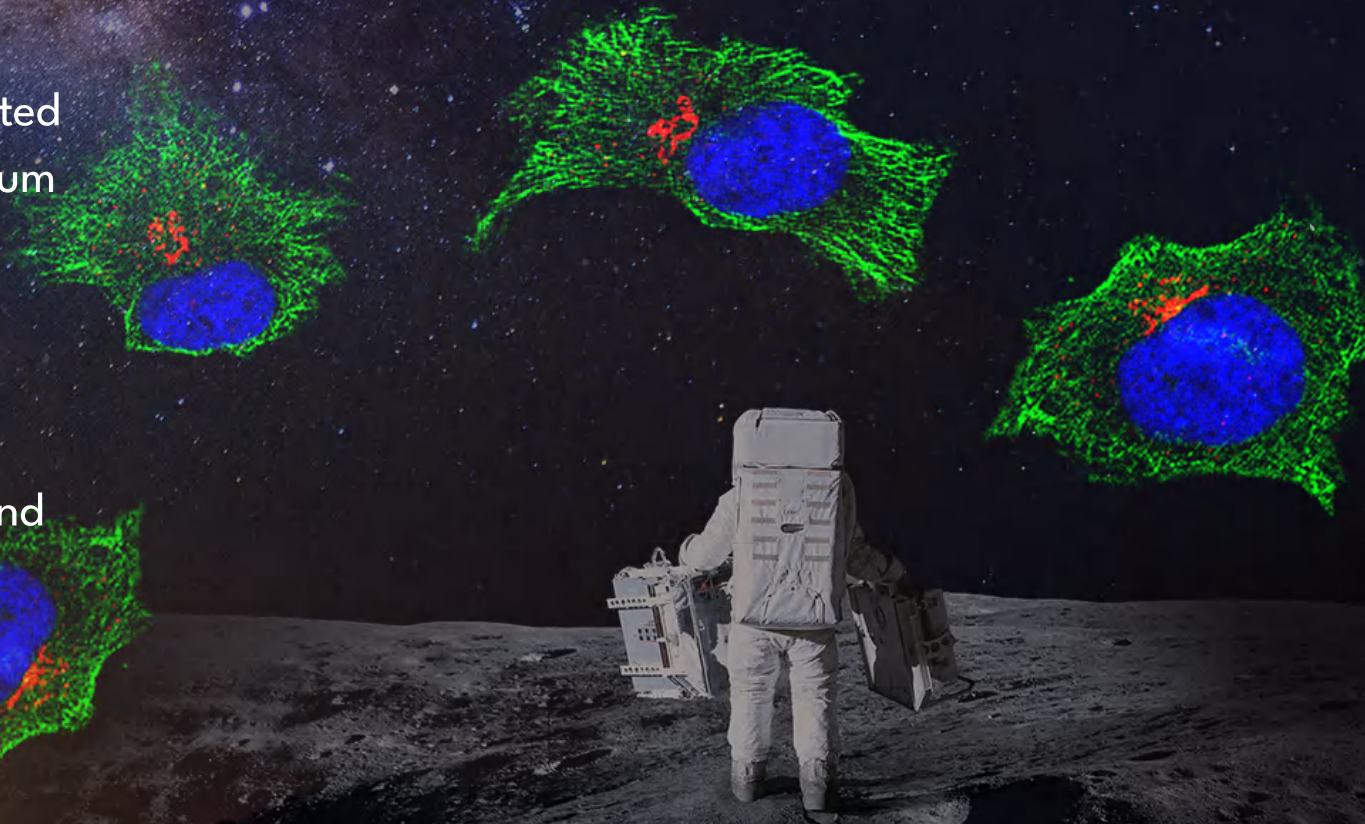


As they plunged deeper into the cell, the explorers encountered the mitochondria, those magical powerhouses of the cell, first discovered by Albert Claude, Christian de Duve, and George Palade. Like discoverers of a new galaxy, they marveled at the mitochondria's complexity and dynamism, with their double membrane and their ability to generate energy through the process of oxidative phosphorylation.

- A0564 HSP60/HSPD1 Rabbit mAb
- Tested applications: WB, IHC-P, IF/ICC
- Reactivity: Human, Mouse, Rat

Mitochondria Marker

Guided by the power of electron microscopy, the explorers navigated through the cell, unearthing the wonders of the endoplasmic reticulum and the Golgi apparatus. Like intrepid adventurers braving an asteroid field, they explored the intricacies of the endoplasmic reticulum, with its rough and smooth regions first observed by Keith Porter, and the Golgi apparatus, with its intricate network of membranes and vesicles that play a crucial role in protein sorting and secretion discovered by Camillo Golgi.



- GM130 Rabbit mAb A11408
- Tested applications: WB, IHC-P, IF/ICC
- Reactivity: Human, Mouse, Rat

Golgi Apparatus Marker

As they journeyed deeper into the cell, the explorers discovered the lysosomes, those magical vesicles responsible for breaking down and recycling cellular waste, first observed by Christian de Duve. Like explorers discovering a new planet with the potential for life, they were in awe of the lysosomes' beauty and complexity, with their single membrane and their powerful digestive enzymes.

- A24023 CD44 Rabbit mAb
- Tested applications: WB, IHC-P, IF/ICC
- Reactivity: Human

Plasma Membrane Marker

Guided by the power of fluorescence microscopy, the explorers charted a course through the cell, uncovering the wonders of the peroxisomes and the cytoskeleton. Like discoverers of a distant nebula, they explored the intricacies of the peroxisomes, with their ability to break down fatty acids and detoxify harmful substances, first observed by Christian de Duve and colleagues, and the cytoskeleton, with its network of microtubules and microfilaments that provide structural support and enable intracellular transport, first discovered by Keith Porter and Albert Claude.

Endosomes Marker

- RAB11A Rabbit mAb A3251
- Tested applications: WB, IF/ICC
- Reactivity: Human, Mouse, Rat

As they journeyed deeper into the cell, the explorers discovered the chloroplasts, those magical organelles responsible for photosynthesis in plants, first discovered by Melvin Calvin, Andrew Benson, and James Bassham. Like discoverers of a new star system with the potential for habitable planets, they marveled at the chloroplasts' complexity and beauty, with their double membrane and intricate network of thylakoid membranes and stroma.


—  A20950 USO1 Rabbit mAb

● Tested applications: WB, IHC-P, IF/ICC

● Reactivity: Human, Mouse, Rat

Golgi Apparatus Marker

Their journey through the microcosmos culminated in the discovery of the perinuclear space, that magical region between the nuclear envelope and the endoplasmic reticulum, first discovered by Keith Porter. Like explorers discovering a new galaxy at the edge of the universe, the explorers were mesmerized by the beauty and complexity of this hidden region, with its unique structure and its crucial role in nuclear envelope assembly and maintenance.

Lamin B2 Rabbit mAb A5001 

Tested applications: WB, IHC-P, IF/ICC ●


Reactivity: Human, Mouse, Rat ●

Nuclear Envelope Marker



“

Their quest to uncover the secrets of the cell was a testament to the power of scientific exploration and the spirit of discovery that drives scientists to push the boundaries of knowledge and understanding. Like adventurers charting a course through the vast expanse of the universe, the explorers journeyed through the depths of the cell, unlocking the secrets of its many organelles and revealing the complexity and beauty of the microscopic world.



ABclonal's rabbit monoclonal antibodies, developed using our proprietary Single B Cell antibody discovery platform, SMab™. With unparalleled precision in antigen recognition and consistent product quality, our antibodies offer a new level of reliability and reproducibility for your experiments. Each antibody is meticulously crafted using the state-of-the-art Single B Cell technology, which allows us to isolate and produce monoclonal antibodies from individual B cells. Through rigorous screening for specificity and affinity, we select only the most effective antibodies for further development. This meticulous process ensures that our antibodies deliver robust and reliable results, giving you the confidence to achieve outstanding outcomes in your research. Explore our comprehensive range of antibody products and experience the power of SMab™ for yourself.


Recommended Antibodies for Organelle & Subcellular Markers

Organelle	Target	Cat.No.	Product Name	Application	Reactivity
Golgi apparatus	GM130	A11408	GM130 Rabbit mAb	WB,IHC,IF/ICC	H,M,R
		A5344	GM130 Rabbit pAb	IHC,IF/ICC	H,M,R
Mitochondria	TOM20	A19403	TOM20 Rabbit mAb	WB,IHC,IF/ICC,IP	H,M,R
		A6774	TOM20 Rabbit pAb	WB,IHC,IF/ICC,IP	H,M,R
	AIF	A2568	[KO Validated] AIF Rabbit pAb	WB,IHC,IF/ICC,IP	H,M,R
		A19536	AIF Rabbit mAb	WB,IHC	H,M,R
	ATPB	A11214	ATPB Rabbit mAb	WB,IHC,IF/ICC	H,M,R
	ATP5A1	A11217	ATP5A1 Rabbit mAb	WB,IHC,IF/ICC,IP	H,M,R
	IMMT	A2751	IMMT Rabbit pAb	WB,IF/ICC	H,M
	Hsp60	A0564	HSP60/HSPD1 Rabbit mAb	WB,IHC,IF/ICC	H,M,R
		A0969	HSP60/HSPD1 Rabbit pAb	WB,IHC,IF/ICC,IP	H,M,R
	COX IV	A11631	COX IV Rabbit mAb	WB,IHC	H,M,R
		A6564	COX IV Rabbit pAb	WB,IF/ICC,IP	H,M,R
	Cytochrome C	A4912	[KO Validated] Cytochrome C Rabbit mAb	WB,IHC	H,M,R
		A13430	Cytochrome C Rabbit pAb	WB,IHC	H,M,R
	VDAC1	A19707	VDAC1 Rabbit mAb	WB,IHC,IF/ICC	H,M,R
	PHB	A19530	Prohibitin Rabbit mAb	WB,IHC	H,M,R
	HK1	A0533	[KO Validated] HK1 Rabbit mAb	WB,IHC,IF/ICC,IP	H,M,R
Endoplasmic reticulum	CALR	A20986	[KD Validated] Calreticulin Rabbit mAb	WB,IHC	H,M,R
		A11563	Calreticulin Rabbit mAb	WB,IHC,IP	H,M,R
	GRP78	A4908	BiP/GRP78 Rabbit mAb	WB,IHC	H,M,R
	GRP78	A0241	BiP/GRP78 Rabbit pAb	WB,IHC	H,M,R
	AGR2	A12411	AGR2 Rabbit mAb	WB,IF/ICC	H,M,R
	PDIA6	A4260	PDIA6 Rabbit mAb	WB,IF/ICC	H,M,R
		A0692	[KO Validated] P4HB Rabbit pAb	WB,IHC,IF/ICC,IP	H,M,R
PDI	A19239	P4HB Rabbit mAb	WB,IHC	H,M,R	
Nuclear envelope	LMNA	A19524	[KO Validated] Lamin A/C Rabbit mAb	WB,IHC,IF/ICC,IP	H,M,R
		A0249	[KO Validated] Lamin A/C Rabbit pAb	WB,IHC,IF/ICC,ChIP	H,M,R
	LMNB	A1910	Lamin B1 Rabbit pAb	WB,IHC,IF/ICC,IP,ChIP	H,M,R
		A11495	Lamin B1 Rabbit mAb	WB,IHC	H,M,R
		A16685	Lamin B1 Rabbit pAb	WB,IF/ICC,IP	H,M,R

Organelle	Target	Cat.No.	Product Name	Application	Reactivity	
Nucleolus		A16909	[KO Validated] Lamin B1 Rabbit pAb	WB,IHC,IF/ICC	H,M,R	
		A16910	Lamin B1 Rabbit pAb	WB,IHC,IF/ICC	H,M,R	
	LMNB2	A5001	Lamin B2 Rabbit mAb	WB,IHC,IF/ICC	H,M,R	
		A6483	Lamin B2 Rabbit pAb	WB,IHC,IF/ICC	H,M,R	
	EMD	A4187	Emerin/EMD Rabbit mAb	WB,IHC,IF/ICC	H,M,R	
		A13925	Emerin/EMD Rabbit pAb	WB,IHC,IF/ICC	H,M	
	FBL	A13490	Fibrillarin/U3 RNP Rabbit pAb	WB,IF/ICC,IP	H,M,R,Mk	
		A0850	Fibrillarin/U3 RNP Rabbit mAb	WB,IF/ICC	H,M,R	
		FUS	A5921	[KO Validated] FUS Rabbit pAb	WB,IHC,IF/ICC,IP	H,M,R
		eIF6	A1818	EIF6 Rabbit pAb	WB,IF/ICC	H
Chromatin	HIST3H3	A2348	Histone H3 Rabbit pAb	WB,IHC,IP,ChIP	H,M,R,Other (Wide Range)	
		A22348	Histone H3 Rabbit mAb	WB,IHC,IP,IF/ICC, CUT&Tag	H,M,R,Oryza sativa	
		A17562	Histone H3 Rabbit mAb	WB,IHC,IF/ICC,ChIP	H,M,R,Oryza sativa,Other (Wide Range)	
		A20734	MonoMethyl-Histone H3-K9 Rabbit mAb	DB,WB,IHC,IF/ICC, ChIP,CUT&Tag	H,M,R,Other (Wide Range)	
		A20735	Acetyl-Histone H3-K18 Rabbit mAb	DB,WB,IHC,ChIP, CUT&Tag,ChIP-seq	H,M,R,Other (Wide Range)	
		AP0002	Phospho-Histone H3-S10 Rabbit mAb	WB,IHC,IF/ICC	H,M,R,Other (Wide Range)	
	TERF2IP	A7981	TERF2IP Rabbit pAb	WB,IF/ICC	H,M	
	CBX5	A3741	HP1 alpha/CBX5 Rabbit mAb	WB,IHC,IF/ICC,IP	H,M,R	
	CBX3	A4283	HP1 gamma/CBX3 Rabbit mAb	WB,IHC	H,M,R	
	Autophagosomes	LC3	A19665	[KO Validated] LC3B Rabbit mAb	WB,IHC,IF/ICC,IP	H,M,R
A17424			LC3B Mouse mAb	WB,IF/ICC	H,M,R	
p62		A19700	[KO Validated] SQSTM1/p62 Rabbit mAb	WB,IHC,IF/ICC,IP	H,M,R	
		A7758	SQSTM1/p62 Rabbit pAb	IHC	H,M,R	
Lysosomes	LAMP1	A16894	LAMP1 Rabbit pAb	WB,IF/ICC	H,R	
		A22067	Abflo® 488 Rabbit anti-Human LAMP1 mAb	FC (Intra)	H	
		A22068	Abflo® 647 Rabbit anti-Human LAMP1 mAb	FC (Intra)	H	
		A21194	[KO Validated] LAMP1 Rabbit mAb	WB,IHC,IF/ICC,FC	H	

Organelle	Target	Cat.No.	Product Name	Application	Reactivity
Endosomes	CLTC	A12423	Clathrin heavy chain Rabbit pAb	WB,IF/ICC	H,M,R
		A4943	Clathrin heavy chain Rabbit mAb	WB,IHC,IF/ICC,IP	H,M,R
	Rab5	A1180	RAB5A Rabbit pAb	WB,IHC,IF/ICC	H,M,R
	Rab11	A3251	RAB11A Rabbit mAb	WB,IF/ICC	H,M,R
	Rab9	A4894	RAB9A Rabbit mAb	WB,IHC,IF/ICC	H,M,R
	Rab7	A12308	RAB7 Rabbit mAb	WB,IF/ICC	H,M,R
		A12784	RAB7 Rabbit pAb	WB	H,M,R
CLTB	A8404	CLTB Rabbit pAb	WB,IF/ICC	H,M,R	
Exosomes	HSPA8	A0415	Hsc70/HSPA8 Rabbit mAb	WB	H,M,R
	Hsp70	A4777	HSP70 Rabbit mAb	WB,IHC,IF/ICC	H,M,R
		A21180	HSP70 Rabbit mAb	WB,IHC	H,M,R
Microtubules	TUBB3	A18132	[KD Validated] β III-Tubulin Mouse mAb	WB,IHC,IF/ICC	H,M,R
		A21889	β III-Tubulin Mouse mAb	WB,IF/ICC	H,M,R
		A17913	β III-Tubulin Rabbit mAb	WB,IF/ICC,IP	H,M,R
	TUBB1	AC021	β -Tubulin Mouse mAb	WB, IHC, IF/ICC, IP	H, M, R, Hm, Mk, Goat, Chlamydomonas, Reinhardtii
	γ -Tubulin	A20225	γ -Tubulin Rabbit mAb	WB,IP	H,M,R
		A9657	γ -Tubulin Rabbit mAb	WB,IHC,IF/ICC	H,M,R
NIN		A8215	NIN Rabbit pAb	WB,IHC	H,M,R
AURKA		A15728	AURKA Rabbit pAb	WB	H
Actin filaments	ACTA2	A17910	α -Smooth Muscle Actin (ACTA2) Rabbit mAb	WB,IHC,IF/ICC	H,M,R
Melanosomes	OA1	A6290	Melan-A/MART-1 Rabbit pAb	WB,IF/ICC	H,M,R
Peroxisomes	DAO	A5309	DAO Rabbit pAb	WB,IF/ICC	H,M,R
		A22081	DAO Rabbit mAb	WB	H,M,R
Ribosomes	RPS19	A3675	RPS19 Rabbit mAb	WB,IF/ICC	H,M,R
	RPS20	A9551	RPS20 Rabbit mAb	WB,IHC,IF/ICC	H,M,R
	RPS3	A4872	RPS3 Rabbit mAb	WB,IF/ICC	H,M,R
	RPS3	A2533	RPS3 Rabbit pAb	WB,IHC,IF/ICC	H,M,R
Proteasomes	PSMA1	A3460	PSMA1 Rabbit mAb	WB,IF/ICC	H,M,R
	PSMA2	A9182	PSMA2 Rabbit mAb	WB,IHC,IF/ICC	H,M,R
	PSMD1	A16420	PSMD1 Rabbit pAb	WB	H,M,R
	PSMD4	A3663	PSMD4 Rabbit mAb	WB,IF/ICC	H,M,R
	PSMD7	A5356	PSMD7 Rabbit pAb	WB,IHC,IF/ICC	H,M
	PSMD14	A9608	PSMD14 Rabbit mAb	WB,IHC,IF/ICC	H,M,R

Organelle	Target	Cat.No.	Product Name	Application	Reactivity	
Centromere	CENPA	A15995	CENPA Rabbit pAb	WB,IF/ICC	H,M,R	
Spindle	AURKB	A19539	Aurora B Rabbit mAb	WB,IF/ICC	H,M,R	
		A21918	[KD Validated] Aurora B Rabbit mAb	WB,IF/ICC	H,M,R	
Cytoplasm	ERK1 / ERK2	A4782	ERK1/2 Rabbit mAb	WB,IHC,IF/ICC,IP	H,M,R	
		A10613	ERK1 / ERK2 Mouse mAb	WB	M,R	
	MEK1	A19565	MEK1 Rabbit mAb	WB,IF/ICC,IP	H,M,R	
		A22436	MEK1 Rabbit mAb	WB,IHC,IP	H,M,R	
Cytoskeleton	β -Actin	AC004	β -Actin Mouse mAb	WB, IF/ICC	H, M, R	
	Desmin	A3736	Desmin Rabbit mAb	WB,IF/ICC	H,M,R	
	KRT20	A19041	Cytokeratin 20 (KRT20) Rabbit mAb	WB,IHC	H,R	
		A0248	Cytokeratin 20 (KRT20) Rabbit pAb	WB,IHC,IF/ICC	H,M	
	KRT8	A1024	Cytokeratin 8 (KRT8) Rabbit pAb	WB,IHC,IF/ICC	H,M,R	
		KRT7	A4765	Cytokeratin 7 (KRT7) Rabbit mAb	WB,IHC	H,M,R
	A4357		Cytokeratin 7 (KRT7) Rabbit mAb	WB,IHC	H,M,R	
	KRT17	A3769	Cytokeratin 17 (KRT17) Rabbit mAb	WB	H	
	KRT14	A19039	Cytokeratin 14 (KRT14) Rabbit mAb	WB,IHC	H,M,R	
		A15069	Cytokeratin 14 (KRT14) Rabbit pAb	WB,IHC,IF/ICC	H,M,R	
	KRT1	A9776	Cytokeratin 1 (KRT1) Rabbit mAb	WB,IHC,IF/ICC	H,M,R	
	KRT4	A0013	Cytokeratin 4 (KRT4) Rabbit mAb	WB,IHC,IF/ICC	H,M,R	
	KRT5	A11396	Cytokeratin 5 (KRT5) Rabbit mAb	WB,IHC,IF/ICC	H,M,R	
	Vimentin	A19607	[KO Validated] Vimentin Rabbit mAb	WB,IHC,IF/ICC,IP	H,M,R	
	Cell junction	E-Cadherin	A18135	E-Cadherin Mouse mAb	WB	H,M
			A21308	[KO Validated] N-Cadherin Rabbit pAb	WB,IHC,IP	H,M,R
			A20798	E-Cadherin Rabbit mAb	WB,IHC,IF/ICC	H,M,R
		N-Cadherin	A19083	[KO Validated] N-Cadherin Rabbit mAb	WB,IHC,IF/ICC	H,M,R
			EPCAM	A19301	EpCAM Rabbit mAb	WB,IHC,IF/ICC
		A1107		EpCAM Rabbit mAb	WB,IHC	H,M,R
Connexin 43		A11752	Connexin 43 Rabbit pAb	WB,IHC,IF/ICC	H,M,R	
Plasma Membrane	Na ⁺ /K ⁺ -ATPase	A11683	Na ⁺ /K ⁺ -ATPase Rabbit mAb	WB,IHC,IF/ICC	H,M,R	
		CD44	A21919	CD44 Rabbit mAb	WB,IHC,IF/ICC,FC	H
	A19020		CD44 Rabbit mAb	WB,IHC,IF/ICC,FC	H	
	A12410		[KO Validated] CD44 Rabbit pAb	WB,IHC,IF/ICC	H,M,R	
Cilium	ARL13B	A5200	ARL13B Rabbit pAb	WB,IF/ICC	H,M,R	
	IFT88	A22622	IFT88 Rabbit mAb	WB	H,M,R	
		A13054	IFT88 Rabbit pAb	WB,IF/ICC	H,M	
	RAB5A	A12304	RAB5A Rabbit mAb	WB	H,M,R	



JOIN US, EXPLORE THE ANTIBODY UNIVERSE OF ABCLONAL

ABclonal utilizes SMAb™ single B cell technology to produce rabbit monoclonal antibodies. These antibodies possess high specificity and can accurately recognize subtle differences between different epitopes, enabling more precise IF/ICC experimental results. Moreover, the batch-to-batch stability of the monoclonal antibodies ensures the reproducibility of your experimental outcomes.



TO LEARN MORE ABOUT OUR ANTIBODIES
PLEASE VISIT: www.abclonal.com

Other ABclonal IF Antibodies Selected Beautiful Images

GET IN TOUCH WITH US NOW TO
UNLOCK EXCLUSIVE OFFERS ON
ABCLONAL IF ANTIBODIES!

Email: info@abclonal.com

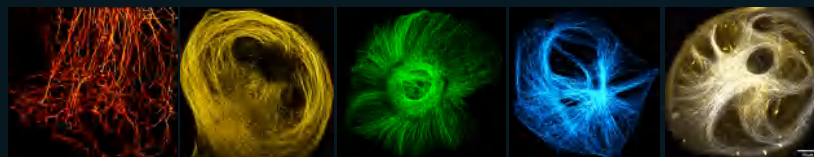
Web: www.abclonal.com



A6830

α -Tubulin Rabbit mAb

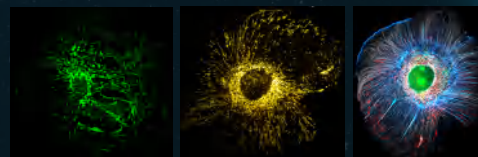
- Tested applications: WB, IHC-P, IF, IP
- Reactivity: Human, Mouse, Rat



A19403

TOM20 Rabbit mAb

- Tested applications: WB, IHC-P, IF/ICC, IP
- Reactivity: Human, Mouse, Rat



A19607

[KO Validated] Vimentin Rabbit mAb

- Tested applications: WB, IHC-P, IF/ICC, IP
- Reactivity: Human, Mouse, Rat



A11217

ATP5A1 Rabbit mAb

- Tested applications: WB, IHC-P, IF/ICC, IP
- Reactivity: Human, Mouse, Rat



References

01

Brown, R. (1833). A brief account of microscopical observations made in the months of June, July and August, 1831, on the particles contained in the pollen of plants; and on the general existence of active molecules in organic and inorganic bodies. *Philosophical Magazine*, 4(21), 161-173.

02

Claude, A., de Duve, C., & Palade, G. (1945). Fractionation of mammalian liver cells by differential centrifugation; separation of lysosomes from other cell particles. *The Journal of Cell Biology*, 1(2), 142-144.

03

Porter, K. R. (1953). Cytoplasmic structure and contractility in amoeboid cells. *The Journal of Experimental Medicine*, 97(6), 727-750.

04

Golgi, C. (1898). Sulla fina anatomia degli organi centrali del sistema nervoso. *Rivista sperimentale di freniatria e medicina legale delle alienazioni mentali*, 24, 377-386.

05

de Duve, C. (1949). Lysosomes. *The Journal of Cell Biology*, 5(3), 373-394.

06

de Duve, C., & Wattiaux, R. (1966). Functions of lysosomes. *Annual Review of Physiology*, 28(1), 435-492.

07

Calvin, M., Benson, A. A., & Bassham, J. A. (1950). The path of carbon in photosynthesis. *Science*, 112(2872), 9-12.

08

Porter, K. R. (1953). Cytoplasmic organization in lymphocytes as revealed by electron microscopy. *The Journal of Experimental Medicine*, 97(5), 727-750.

09

Porter, K. R., & Claude, A. (1948). Electron microscopy of the cytoplasmic structure of normal and malignant cells. *The Journal of Experimental Medicine*, 88(3), 221-242.